

Certificate of Analysis

www.tocris.com

Product Name: Risperidone - d₄

Catalog No.: 5538

Batch No.: 1

CAS Number: 1020719-76-9

IUPAC Name: 3-[2-[4-(6-Fluoro-1,2-benzisoxazol-3-yl)-1-piperidinyl]ethyl-1,1,2,2-d₄]-6,7,8,9-tetrahydro-2-methyl-4H-pyrido[1,2-a]pyrimidin-4-one

1. PHYSICAL AND CHEMICAL PROPERTIES

Batch Molecular Formula: C₂₃H₂₃D₄FN₄O₂

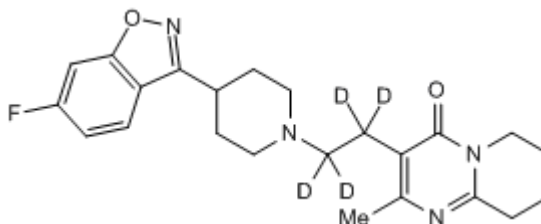
Batch Molecular Weight: 414.52

Physical Appearance: White solid

Solubility: ethanol to 10 mM
DMSO to 10 mM

Storage: Store at +4°C

Batch Molecular Structure:



2. ANALYTICAL DATA

Isotopic Purity: 99.6% D

HPLC: Shows 99.5% purity

¹H NMR: Consistent with structure

Mass Spectrum: Consistent with structure

Caution - Not Fully Tested • Research Use Only • Not For Human or Veterinary Use

Product Name: Risperidone - d₄

Catalog No.: 5538

Batch No.: 1

CAS Number: 1020719-76-9

IUPAC Name: 3-[2-[4-(6-Fluoro-1,2-benzisoxazol-3-yl)-1-piperidinyl]ethyl-1,1,2,2-d₄]-6,7,8,9-tetrahydro-2-methyl-4H-pyrido[1,2-a]pyrimidin-4-one

Description:

Deuterated risperidone (Cat. No. 2865).

Physical and Chemical Properties:

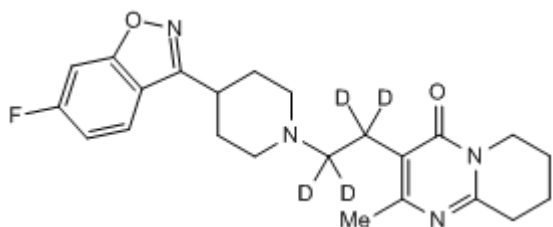
Batch Molecular Formula: C₂₃H₂₃D₄FN₄O₂

Batch Molecular Weight: 414.52

Physical Appearance: White solid

Minimum Purity: >98%

Batch Molecular Structure:



Storage: Store at +4°C

Solubility & Usage Info:

ethanol to 10 mM

DMSO to 10 mM

Stability and Solubility Advice:

Some solutions can be difficult to obtain and can be encouraged by rapid stirring, sonication or gentle warming (in a 45-60°C water bath).

Information concerning product stability, particularly in solution, has rarely been reported and in most cases we can only offer a general guide. Our standard recommendations are:

SOLIDS: Provided storage is as stated on the product label and the vial is kept tightly sealed, the product can be stored for up to 6 months from date of receipt.

SOLUTIONS: We recommend that stock solutions, once prepared, are stored aliquoted in tightly sealed vials at -20°C or below and used within 1 month. Wherever possible solutions should be made up and used on the same day.

Caution - Not Fully Tested • Research Use Only • Not For Human or Veterinary Use

bio-techne.com

info@bio-techne.com

techsupport@bio-techne.com

North America

Tel: (800) 343 7475

China

info.cn@bio-techne.com

Tel: +86 (21) 52380373

Europe Middle East Africa

Tel: +44 (0)1235 529449

Rest of World

www.tocris.com/distributors

Tel: +1 612 379 2956