

**Product Name:** Ispinesib

**Catalog No.:** 5408

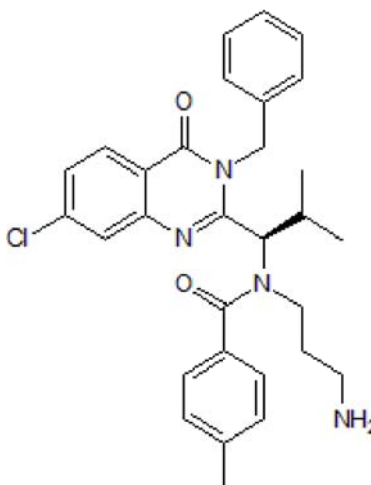
**Batch No.:** 1

CAS Number: 336113-53-2

IUPAC Name: *N*-(3-Aminopropyl)-*N*-[(1*R*)-1-[7-chloro-3,4-dihydro-4-oxo-3-(phenylmethyl)-2-quinazoliny]-2-methylpropyl]-4-methylbenzamide

## 1. PHYSICAL AND CHEMICAL PROPERTIES

<b>Batch Molecular Formula:</b>	C <sub>30</sub> H <sub>33</sub> ClN <sub>4</sub> O <sub>2</sub>
<b>Batch Molecular Weight:</b>	517.06
<b>Physical Appearance:</b>	Beige solid
<b>Solubility:</b>	DMSO to 100 mM ethanol to 100 mM
<b>Storage:</b>	Store at -20°C
<b>Batch Molecular Structure:</b>	



## 2. ANALYTICAL DATA

<b>HPLC:</b>	Shows 98.3% purity
<b><sup>1</sup>H NMR:</b>	Consistent with structure
<b>Mass Spectrum:</b>	Consistent with structure

<b>Microanalysis:</b>	Carbon Hydrogen Nitrogen		
Theoretical	69.69	6.43	10.84
Found	69.41	6.52	10.9

Caution - Not Fully Tested • Research Use Only • Not For Human or Veterinary Use

**Product Name:** Ispinesib

**Catalog No.:** 5408

**Batch No.:** 1

CAS Number: 336113-53-2

IUPAC Name: *N*-(3-Aminopropyl)-*N*-[(1*R*)-1-[7-chloro-3,4-dihydro-4-oxo-3-(phenylmethyl)-2-quinazoliny]-2-methylpropyl]-4-methylbenzamide

**Description:**

High affinity allosteric kinesin spindle protein (KSP) inhibitor ( $K_{i\text{ app}} = 1.7 \text{ nM}$ ). Exhibits >10,000-fold selectivity for KSP over a range of other mitotic kinesins. Inhibits proliferation and induces apoptosis of prostate and breast cancer cells in vitro. Induces tumor regression of breast cancer cell xenografts in mice.

**Physical and Chemical Properties:**

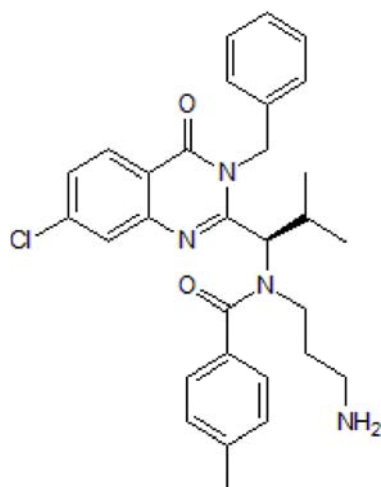
Batch Molecular Formula:  $\text{C}_{30}\text{H}_{33}\text{ClN}_4\text{O}_2$

Batch Molecular Weight: 517.06

Physical Appearance: Beige solid

**Minimum Purity:** ≥98%

**Batch Molecular Structure:**



**Storage:** Store at -20°C

**Solubility & Usage Info:**

DMSO to 100 mM  
ethanol to 100 mM

**Stability and Solubility Advice:**

Some solutions can be difficult to obtain and can be encouraged by rapid stirring, sonication or gentle warming (in a 45-60°C water bath).

Information concerning product stability, particularly in solution, has rarely been reported and in most cases we can only offer a general guide. Our standard recommendations are:

**SOLIDS:** Provided storage is as stated on the product label and the vial is kept tightly sealed, the product can be stored for up to 6 months from date of receipt.

**SOLUTIONS:** We recommend that stock solutions, once prepared, are stored aliquoted in tightly sealed vials at -20°C or below and used within 1 month. Wherever possible solutions should be made up and used on the same day.

**References:**

**Purcell et al** (2010) Activity of the kinesin spindle protein inhibitor ispinesib (SB-715992) in models of breast cancer. *Clin.Cancer Res.* **16** 566. PMID: 20068098.

**Lad et al** (2008) Mechanism of inhibition of human KSP by ispinesib. *Biochemistry* **47** 3576. PMID: 18290633.

**Davis et al** (2006) Increased therapeutic potential of an experimental anti-mitotic inhibitor SB715992 by genistein in PC-3 human prostate cancer cell line. *BMC Cancer* **6** 22. PMID: 16433906.

Caution - Not Fully Tested • Research Use Only • Not For Human or Veterinary Use

**bio-techne.com**

info@bio-techne.com

techsupport@bio-techne.com

**North America**

Tel: (800) 343 7475

**China**

info.cn@bio-techne.com

Tel: +86 (21) 52380373

**Europe Middle East Africa**

Tel: +44 (0)1235 529449

**Rest of World**

www.tocris.com/distributors

Tel:+1 612 379 2956