

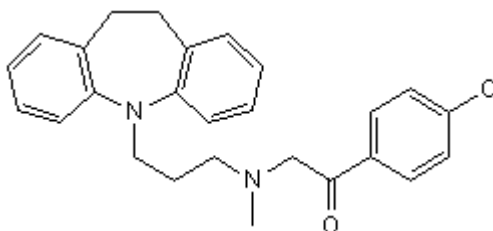
Certificate of Analysis

www.tocris.com

Product Name: Lofepramine	Catalog No.: 2545	Batch No.: 1
CAS Number: 23047-25-8	EC Number: 245-396-8	
IUPAC Name: 1-(4-Chlorophenyl)-2-[[3-(10,11-dihydro-5H-dibenz(Z)[b,f]azepin-5-yl)propyl]methylamino]ethanone		

1. PHYSICAL AND CHEMICAL PROPERTIES

Batch Molecular Formula: C₂₆H₂₇N₂OCl
Batch Molecular Weight: 418.97
Physical Appearance: Light yellow solid
Solubility: DMSO to 75 mM
ethanol to 10 mM
Storage: Store at +4°C
Batch Molecular Structure:



2. ANALYTICAL DATA

Melting Point: At 104°C
HPLC: Shows >99.2% purity
¹H NMR: Consistent with structure
Mass Spectrum: Consistent with structure
Microanalysis:

	Carbon	Hydrogen	Nitrogen
Theoretical	74.54	6.5	6.69
Found	74.34	6.47	6.69

Caution - Not Fully Tested • Research Use Only • Not For Human or Veterinary Use

Product Name: Lofepramine	Catalog No.: 2545	Batch No.: 1
CAS Number: 23047-25-8	EC Number: 245-396-8	
IUPAC Name: 1-(4-Chlorophenyl)-2-[[3-(10,11-dihydro-5H-dibenz(Z)[b,f]azepin-5-yl)propyl]methylamino]ethanone		

Description:

Serotonin and noradrenalin re-uptake inhibitor (SNRI) that is metabolized to desipramine. Produces inhibition of liver tryptophan pyrrollase activity in vitro and displays antidepressant properties in vivo.

Physical and Chemical Properties:

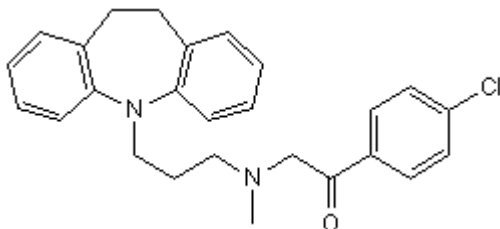
Batch Molecular Formula: C₂₆H₂₇N₂OCl

Batch Molecular Weight: 418.97

Physical Appearance: Light yellow solid

Minimum Purity: >99%

Batch Molecular Structure:



Storage: Store at +4°C

Solubility & Usage Info:

DMSO to 75 mM
ethanol to 10 mM

Stability and Solubility Advice:

Some solutions can be difficult to obtain and can be encouraged by rapid stirring, sonication or gentle warming (in a 45-60°C water bath).

Information concerning product stability, particularly in solution, has rarely been reported and in most cases we can only offer a general guide. Our standard recommendations are:

SOLIDS: Provided storage is as stated on the product label and the vial is kept tightly sealed, the product can be stored for up to 6 months from date of receipt.

SOLUTIONS: We recommend that stock solutions, once prepared, are stored aliquoted in tightly sealed vials at -20°C or below and used within 1 month. Wherever possible solutions should be made up and used on the same day.

References:

Leonard (1987) A comparison of the pharmacological properties of the novel tricyclic antidepressant lofepramine with its major metabolite, desipramine: a review. *Int.Clin.Psychopharmacol.* **2** 281. PMID: 2891742.

Badawy et al (1991) The effects of lofepramine and desmethylimipramine on tryptophan metabolism and disposition in the rat *Biochem.Pharmacol.* **42** 921. PMID: 1867646.

Kelly and Leonard (1999) An investigation of the antidepressant properties of lofepramine and its desmethylated metabolites in the forced swim and olfactory bulbectomized rat models of depression. *Eur.Neuropsychopharmacol.* **9** 101. PMID: 10082234.

Caution - Not Fully Tested • Research Use Only • Not For Human or Veterinary Use

bio-techne.com
info@bio-techne.com
techsupport@bio-techne.com

North America
Tel: (800) 343 7475

China
info.cn@bio-techne.com
Tel: +86 (21) 52380373

Europe Middle East Africa
Tel: +44 (0)1235 529449

Rest of World
www.tocris.com/distributors
Tel:+1 612 379 2956