

Product Name: Serotonin Uptake Inhibitor Tocriset™

Catalog No.: 1877

Batch No.: 1

1. Tocriset™ Description

A Tocriset™ consists of 3 to 5 key compounds that are active within a defined pharmacological area or a signaling pathway. Most compounds are supplied in a solid format in a specified molar amount so that solvent can be added *directly* to the vial. For example, addition of 500 µL of solvent to a vial containing 5 µmol of compound yields a 10 mM stock solution. Some compounds that are unsuitable for lyophilization are provided pre-dissolved in DMSO.

The Serotonin Uptake Inhibitor Tocriset™ contains the listed products as lyophilised solids which can be used to modulate serotonin re-uptake.

| Cat.No. | Product / Activity | Batch | Amount | Format |
|-------------|--|-------|--------|--------------------|
| 0457 | Clomipramine hydrochloride Potent, selective 5-HT uptake blocker | 3 | 5 µmol | Freeze-dried solid |
| 0927 | Fluoxetine hydrochloride Selective 5-HT re-uptake inhibitor | 3 | 5 µmol | Freeze-dried solid |
| 1033 | Fluvoxamine maleate Selective 5-HT re-uptake inhibitor | 5 | 5 µmol | Freeze-dried solid |
| 1427 | Citalopram hydrobromide Highly selective, potent 5-HT uptake inhibitor | 1 | 5 µmol | Freeze-dried solid |

2. Storage & Solubility

SOLIDS: Provided storage is as stated on the product label and the vial is kept tightly sealed, the product can be stored for up to 6 months from date of receipt.

SOLUTIONS: We recommend that stock solutions, once prepared, are stored aliquoted in tightly sealed vials at -20°C or below and used within 1 month, unless indicated below. Wherever possible solutions should be made up and stored on the same day. Please note that the prepared stock solutions are light sensitive and should be protected from light.

Suitable solvents and maximum solubilities are detailed in Section 3. Some solutions can be difficult to obtain and can be encouraged by rapid stirring, sonication or gentle warming (in a 45-60°C water bath).

Caution - Not Fully Tested • Research Use Only • Not For Human or Veterinary Use

bio-techne.com
info@bio-techne.com
techsupport@bio-techne.com

North America
Tel: (800) 343 7475

China
info.cn@bio-techne.com
Tel: +86 (21) 52380373

Europe Middle East Africa
Tel: +44 (0)1235 529449

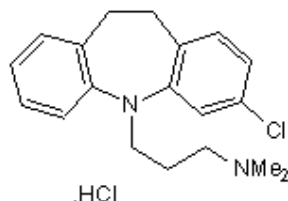
Rest of World
www.tocris.com/distributors
Tel: +1 612 379 2956

Product Name: Serotonin Uptake Inhibitor Tocriset™

Catalog No.: 1877

Batch No.: 1

3. Additional Product Details



Product Name: Clomipramine hydrochloride

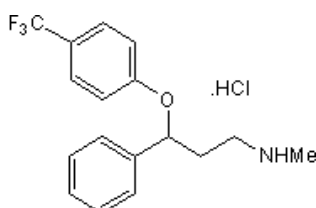
Cat. No: 0457

Activity: 5-HT re-uptake inhibitor

Storage of unopened vial: Store at RT

Solubility & Usage Info: Soluble to 100 mM in water

This product is freeze dried which may make it appear as a clear, thin film on the walls of the vial and therefore difficult to visualize.



Product Name: Fluoxetine hydrochloride

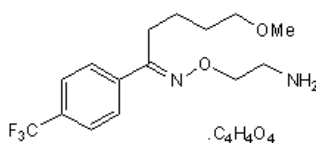
Cat. No: 0927

Activity: 5-HT re-uptake inhibitor

Storage of unopened vial: Store at RT

Solubility & Usage Info: Soluble to 100 mM in DMSO and to 10 mM in water

This product is freeze dried which may make it appear as a clear, thin film on the walls of the vial and therefore difficult to visualize.



Product Name: Fluvoxamine maleate

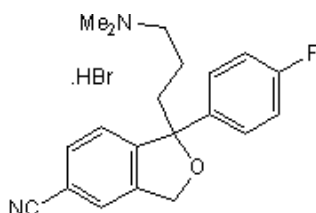
Cat. No: 1033

Activity: 5-HT re-uptake inhibitor

Storage of unopened vial: Desiccate at +4°C

Solubility & Usage Info: Soluble to 10 mM in water

This product is freeze dried which may make it appear as a clear, thin film on the walls of the vial and therefore difficult to visualize.



Product Name: Citalopram hydrobromide

Cat. No: 1427

Activity: Highly potent and selective 5-HT uptake inhibitor

Storage of unopened vial: Store at RT

Solubility & Usage Info: Soluble to 50 mM in ethanol and to 10 mM in water

This product is freeze dried which may make it appear as a clear, thin film on the walls of the vial and therefore difficult to visualize.

Caution - Not Fully Tested • Research Use Only • Not For Human or Veterinary Use