

Product Name: (S)-(+)-Rolipram

Catalog No.: 1350

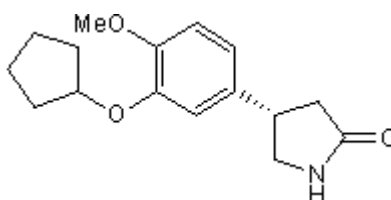
Batch No.: 6

CAS Number: 85416-73-5

IUPAC Name: (4S)-4-[3-(Cyclopentyloxy)-4-methoxyphenyl]pyrrolidin-2-one

1. PHYSICAL AND CHEMICAL PROPERTIES

Batch Molecular Formula: C₁₆H₂₁NO₃
Batch Molecular Weight: 275.35
Physical Appearance: Off White solid
Solubility: DMSO to 100 mM
Storage: Store at RT
Batch Molecular Structure:



2. ANALYTICAL DATA

HPLC: Shows 100% purity
Chiral HPLC: Shows 100% purity
¹H NMR: Consistent with structure
Mass Spectrum: Consistent with structure

Microanalysis:

	Carbon	Hydrogen	Nitrogen
Theoretical	69.79	7.69	5.09
Found	70.16	7.73	5.03

Caution - Not Fully Tested • Research Use Only • Not For Human or Veterinary Use

Product Name: (S)-(+)-Rolipram

Catalog No.: 1350

Batch No.: 6

CAS Number: 85416-73-5

IUPAC Name: (4S)-4-[3-(Cyclopentyloxy)-4-methoxyphenyl]pyrrolidin-2-one

Description:

Less active enantiomer of the PDE4 inhibitor rolipram (Cat. No. 0905). (R)-(-)-Rolipram (Cat. No. 1349) also available.

Physical and Chemical Properties:

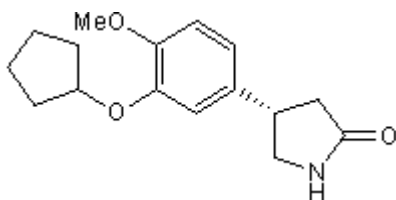
Batch Molecular Formula: C₁₆H₂₁NO₃

Batch Molecular Weight: 275.35

Physical Appearance: Off White solid

Minimum Purity: >99%

Batch Molecular Structure:



Storage: Store at RT

Solubility & Usage Info:

DMSO to 100 mM

Stability and Solubility Advice:

Some solutions can be difficult to obtain and can be encouraged by rapid stirring, sonication or gentle warming (in a 45-60°C water bath).

Information concerning product stability, particularly in solution, has rarely been reported and in most cases we can only offer a general guide. Our standard recommendations are:

SOLIDS: Provided storage is as stated on the product label and the vial is kept tightly sealed, the product can be stored for up to 6 months from date of receipt.

SOLUTIONS: We recommend that stock solutions, once prepared, are stored aliquoted in tightly sealed vials at -20°C or below and used within 1 month. Wherever possible solutions should be made up and used on the same day.

References:

Schneider et al (1986) Stereospecific binding of the antidepressant rolipram to brain protein structures. *Eur.J.Pharmacol.* **127** 105. PMID: 3019721.

Owens et al (1997) Human phosphodiesterase 4A: characterization of full-length and truncated enzymes expressed in COS cells. *Biochem.J.* **326** 53. PMID: 9337850.

Ohsawa et al (1998) Inhibitory effects of rolipram on partially purified phosphodiesterase 4 from rat brains. *Jpn.J.Pharmacol.* **77** 147. PMID: 9681571.

Caution - Not Fully Tested • Research Use Only • Not For Human or Veterinary Use

bio-techne.com

info@bio-techne.com

techsupport@bio-techne.com

North America

Tel: (800) 343 7475

China

info.cn@bio-techne.com

Tel: +86 (21) 52380373

Europe Middle East Africa

Tel: +44 (0)1235 529449

Rest of World

www.tocris.com/distributors

Tel: +1 612 379 2956