

# Certificate of Analysis

[www.tocris.com](http://www.tocris.com)

**Product Name:** (R)-(-)-Rolipram

**Catalog No.:** 1349

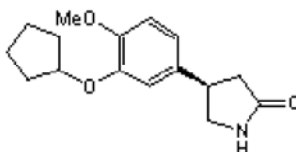
**Batch No.:** 2

**CAS Number:** 85416-75-7

**IUPAC Name:** (4R)-4-[3-(Cyclopentyloxy)-4-methoxyphenyl]pyrrolidin-2-one

## 1. PHYSICAL AND CHEMICAL PROPERTIES

**Batch Molecular Formula:** C<sub>16</sub>H<sub>21</sub>NO<sub>3</sub>  
**Batch Molecular Weight:** 275.35  
**Physical Appearance:** White crystalline solid  
**Solubility:** ethanol to 100 mM  
DMSO to 100 mM  
**Storage:** Store at RT  
**Batch Molecular Structure:**



## 2. ANALYTICAL DATA

**TLC:** R<sub>f</sub> = 0.6 (Dichloromethane:Methanol [95:5])  
**Melting Point:** At 133°C  
**HPLC:** Shows 100% purity  
**Chiral HPLC:** Shows >99% purity  
**<sup>1</sup>H NMR:** Consistent with structure  
**Microanalysis:**

	Carbon Hydrogen Nitrogen			
Theoretical	69.79	7.69	5.09	0 0 0
Found	69.68	7.68	4.97	0 0 0

Caution - Not Fully Tested • Research Use Only • Not For Human or Veterinary Use

**bio-techne.com**

info@bio-techne.com  
techsupport@bio-techne.com

**North America**

Tel: (800) 343 7475

**China**

info.cn@bio-techne.com  
Tel: +86 (21) 52380373

**Europe Middle East Africa**

Tel: +44 (0)1235 529449

**Rest of World**

[www.tocris.com/distributors](http://www.tocris.com/distributors)  
Tel: +1 612 379 2956

## Product Information

[www.tocris.com](http://www.tocris.com)

**Product Name:** (R)-(-)-Rolipram

**Catalog No.:** 1349

**Batch No.:** 2

**CAS Number:** 85416-75-7

**IUPAC Name:** (4R)-4-[3-(Cyclopentyloxy)-4-methoxyphenyl]pyrrolidin-2-one

### Description:

More active enantiomer of the PDE4 inhibitor rolipram; 2-10-fold more potent than the S-(+) enantiomer. Available as part of the Phosphodiesterase Inhibitor Tocriset™. Racemate and S-enantiomer also available.

### Physical and Chemical Properties:

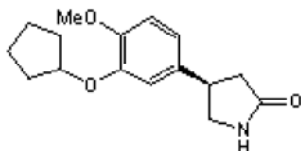
Batch Molecular Formula: C<sub>16</sub>H<sub>21</sub>NO<sub>3</sub>

Batch Molecular Weight: 275.35

Physical Appearance: White crystalline solid

**Minimum Purity:** >98%

### Batch Molecular Structure:



**Storage:** Store at RT

### Solubility & Usage Info:

ethanol to 100 mM

DMSO to 100 mM

### Stability and Solubility Advice:

Some solutions can be difficult to obtain and can be encouraged by rapid stirring, sonication or gentle warming (in a 45-60°C water bath).

Information concerning product stability, particularly in solution, has rarely been reported and in most cases we can only offer a general guide. Our standard recommendations are:

**SOLIDS:** Provided storage is as stated on the product label and the vial is kept tightly sealed, the product can be stored for up to 6 months from date of receipt.

**SOLUTIONS:** We recommend that stock solutions, once prepared, are stored aliquoted in tightly sealed vials at -20°C or below and used within 1 month. Wherever possible solutions should be made up and used on the same day.

### References:

**Ohsawa *et al*** (1998) Inhibitory effects of rolipram on partially purified phosphodiesterase 4 from rat brains. *Jpn.J.Pharmacol.* **77** 147. PMID: 9681571.

**Owens *et al*** (1997) Human phosphodiesterase 4A: characterization of full-length and truncated enzymes expressed in COS cells. *Biochem.J.* **326** 53. PMID: 9337850.

**Schneider *et al*** (1986) Stereospecific binding of the antidepressant rolipram to brain protein structures. *Eur.J.Pharmacol.* **127** 105. PMID: 3019721.

Caution - Not Fully Tested • Research Use Only • Not For Human or Veterinary Use

#### bio-techne.com

info@bio-techne.com

techsupport@bio-techne.com

#### North America

Tel: (800) 343 7475

#### China

info.cn@bio-techne.com

Tel: +86 (21) 52380373

#### Europe Middle East Africa

Tel: +44 (0)1235 529449

#### Rest of World

[www.tocris.com/distributors](http://www.tocris.com/distributors)

Tel: +1 612 379 2956