

Product Name: 4-P-PDOT

Catalog No.: 1034

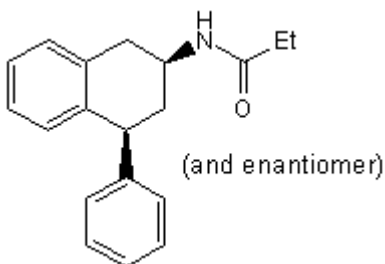
Batch No.: 6

CAS Number: 620170-78-7

IUPAC Name: cis-4-Phenyl-2-propionamidotetralin

1. PHYSICAL AND CHEMICAL PROPERTIES

Batch Molecular Formula: C₁₉H₂₁NO.¼H₂O
Batch Molecular Weight: 283.88
Physical Appearance: White solid
Solubility: DMSO to 100 mM
ethanol to 100 mM
Storage: Store at RT
Batch Molecular Structure:



2. ANALYTICAL DATA

TLC: R_f = 0.4 (Ethyl acetate:Petrol [1:1])
HPLC: Shows 99.8% purity
¹H NMR: Consistent with structure
Mass Spectrum: Consistent with structure
Microanalysis:

	Carbon	Hydrogen	Nitrogen
Theoretical	80.39	7.63	4.93
Found	80.57	7.62	4.96

Caution - Not Fully Tested • Research Use Only • Not For Human or Veterinary Use

Product Name: 4-P-PDOT

Catalog No.: 1034

Batch No.: 6

CAS Number: 620170-78-7

IUPAC Name: cis-4-Phenyl-2-propionamidotetraalin

Description:

Melatonin receptor antagonist, >300-fold selective for the MT₂ (vs MT₁) subtype.

Physical and Chemical Properties:

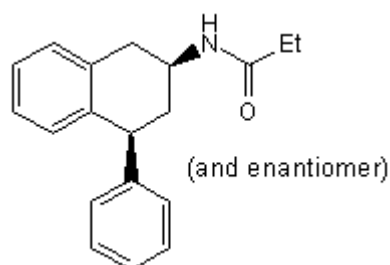
Batch Molecular Formula: C₁₉H₂₁NO.¼H₂O

Batch Molecular Weight: 283.88

Physical Appearance: White solid

Minimum Purity: >99%

Batch Molecular Structure:



Storage: Store at RT

Solubility & Usage Info:

DMSO to 100 mM

ethanol to 100 mM

Stability and Solubility Advice:

Some solutions can be difficult to obtain and can be encouraged by rapid stirring, sonication or gentle warming (in a 45-60°C water bath).

Information concerning product stability, particularly in solution, has rarely been reported and in most cases we can only offer a general guide. Our standard recommendations are:

SOLIDS: Provided storage is as stated on the product label and the vial is kept tightly sealed, the product can be stored for up to 6 months from date of receipt.

SOLUTIONS: We recommend that stock solutions, once prepared, are stored aliquoted in tightly sealed vials at -20°C or below and used within 1 month. Wherever possible solutions should be made up and used on the same day.

References:

Dubocovich et al (1997) Melatonin receptor antagonists that differentiate between the human Mel_{1a} and Mel_{1b} recombinant subtypes are used to assess the pharmacological profile of the rabbit retina M_{L1} presynaptic heteroreceptor. *Naunyn Schmiedebergs Arch.Pharmacol.* **355** 365. PMID: 9089668.

Dubocovich et al (1995) Melatonin receptors: are there multiple subtypes? *TiPS* **16** 50. PMID: 7762083.

Caution - Not Fully Tested • Research Use Only • Not For Human or Veterinary Use

bio-techne.com

info@bio-techne.com

techsupport@bio-techne.com

North America

Tel: (800) 343 7475

China

info.cn@bio-techne.com

Tel: +86 (21) 52380373

Europe Middle East Africa

Tel: +44 (0)1235 529449

Rest of World

www.tocris.com/distributors

Tel: +1 612 379 2956