

Product Name: CPPG

Catalog No.: 0972

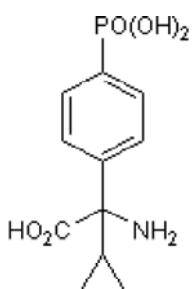
Batch No.: 13

CAS Number: 183364-82-1

IUPAC Name: (RS)- α -Cyclopropyl-4-phosphonophenylglycine

1. PHYSICAL AND CHEMICAL PROPERTIES

Batch Molecular Formula: C₁₁H₁₄NO₅P
Batch Molecular Weight: 271.21
Physical Appearance: White solid
Solubility: 1eq. NaOH to 100 mM
Storage: Store at RT
Batch Molecular Structure:



2. ANALYTICAL DATA

TLC: R_f = 0.12 (Pyridine:Acetic acid:Water:Butanol [3:8:11:33])
HPLC: Shows 98.7% purity
¹H NMR: Consistent with structure
Mass Spectrum: Consistent with structure

Microanalysis:

	Carbon	Hydrogen	Nitrogen
Theoretical	48.71	5.2	5.16
Found	48.37	5.19	5.34

Caution - Not Fully Tested • Research Use Only • Not For Human or Veterinary Use

bio-techne.com

info@bio-techne.com
techsupport@bio-techne.com

North America

Tel: (800) 343 7475

China

info.cn@bio-techne.com
Tel: +86 (21) 52380373

Europe Middle East Africa

Tel: +44 (0)1235 529449

Rest of World

www.tocris.com/distributors
Tel:+1 612 379 2956

Product Name: CPPG

Catalog No.: 0972

Batch No.: 13

CAS Number: 183364-82-1

IUPAC Name: (R*S*)- α -Cyclopropyl-4-phosphonophenylglycine

Description:

Potent group II/III mGlu receptor antagonist, with approximately 20-fold selectivity for group III over group II (IC₅₀ values of 2.2 and 46.2 nM respectively). A much less potent antagonist at group I receptors in neonatal rat cortical slices (K_B = 0.65 ± 0.07 nM).

Physical and Chemical Properties:

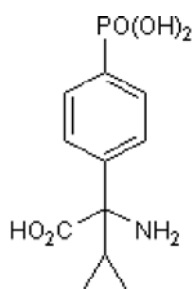
Batch Molecular Formula: C₁₁H₁₄NO₅P

Batch Molecular Weight: 271.21

Physical Appearance: White solid

Minimum Purity: ≥98%

Batch Molecular Structure:



References:

Jane *et al* (1996) Potent antagonists at the L-AP4- and (1*S*, 3*S*)-ACPD-sensitive presynaptic metabotropic glutamate receptors in the neonatal rat spinal cord. *Neuropharmacology* **35** 1029. PMID: 9121605.

Kemp *et al* (1996) α -Methyl-3-phosphonophenylglycine and α -cyclopropyl-4-phosphonophenylglycine are potent antagonists at mGluRs negatively coupled to adenylyl cyclase. *Br.J.Pharmacol.* **117** (in press).

Toms *et al* (1996) The effects of (R*S*)- α -cyclopropyl-4-phosphonophenylglycine ((R*S*)-CPPG), a potent and selective metabotropic glutamate receptor antagonist. *Br.J.Pharmacol.* **119** 851. PMID: 8922731.

Storage: Store at RT

Solubility & Usage Info:

1eq. NaOH to 100 mM

Stability and Solubility Advice:

Some solutions can be difficult to obtain and can be encouraged by rapid stirring, sonication or gentle warming (in a 45-60°C water bath).

Information concerning product stability, particularly in solution, has rarely been reported and in most cases we can only offer a general guide. Our standard recommendations are:

SOLIDS: Provided storage is as stated on the product label and the vial is kept tightly sealed, the product can be stored for up to 6 months from date of receipt.

SOLUTIONS: We recommend that stock solutions, once prepared, are stored aliquoted in tightly sealed vials at -20°C or below and used within 1 month. Wherever possible solutions should be made up and used on the same day.

Caution - Not Fully Tested • Research Use Only • Not For Human or Veterinary Use

bio-techne.com

info@bio-techne.com

techsupport@bio-techne.com

North America

Tel: (800) 343 7475

China

info.cn@bio-techne.com

Tel: +86 (21) 52380373

Europe Middle East Africa

Tel: +44 (0)1235 529449

Rest of World

www.tocris.com/distributors

Tel:+1 612 379 2956