

## Certificate of Analysis

[www.tocris.com](http://www.tocris.com)

**Product Name:** Maprotiline hydrochloride

**Catalog No.:** 0935

**Batch No.:** 4

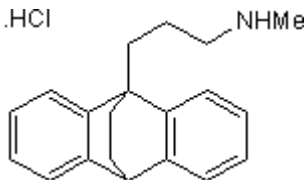
CAS Number: 10347-81-6

EC Number: 233-758-8

IUPAC Name: 1-(3-Methylaminopropyl)dibenzo[*b,e*]bicyclo[2.2.2]octadiene hydrochloride

### 1. PHYSICAL AND CHEMICAL PROPERTIES

**Batch Molecular Formula:** C<sub>20</sub>H<sub>23</sub>N.HCl  
**Batch Molecular Weight:** 313.87  
**Physical Appearance:** White crystalline solid  
**Solubility:** ethanol to 10 mM  
 water to 10 mM  
**Storage:** Store at RT  
**Batch Molecular Structure:**



### 2. ANALYTICAL DATA

**TLC:** R<sub>f</sub> = 0.76 (Pyridine:Acetic acid:Water:Butanol [3:8:11:33])  
**Melting Point:** At 261°C  
**HPLC:** Shows 100% purity  
<sup>1</sup>H NMR: Consistent with structure  
**Microanalysis:**

	Carbon Hydrogen Nitrogen		
Theoretical	76.53	7.71	4.46
Found	76.55	7.78	4.57

Caution - Not Fully Tested • Research Use Only • Not For Human or Veterinary Use

## Product Information

[www.tocris.com](http://www.tocris.com)

**Product Name:** Maprotiline hydrochloride

**Catalog No.:** 0935

**Batch No.:** 4

CAS Number: 10347-81-6

EC Number: 233-758-8

IUPAC Name: 1-(3-Methylaminopropyl)dibenzo[*b,e*]bicyclo[2.2.2]octadiene hydrochloride

### Description:

Selective noradrenalin re-uptake inhibitor.

### Physical and Chemical Properties:

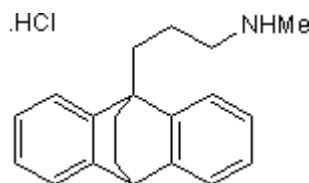
Batch Molecular Formula: C<sub>20</sub>H<sub>23</sub>N.HCl

Batch Molecular Weight: 313.87

Physical Appearance: White crystalline solid

**Minimum Purity:** >99%

### Batch Molecular Structure:



**Storage:** Store at RT

### Solubility & Usage Info:

ethanol to 10 mM

water to 10 mM

### Stability and Solubility Advice:

Some solutions can be difficult to obtain and can be encouraged by rapid stirring, sonication or gentle warming (in a 45-60°C water bath).

Information concerning product stability, particularly in solution, has rarely been reported and in most cases we can only offer a general guide. Our standard recommendations are:

**SOLIDS:** Provided storage is as stated on the product label and the vial is kept tightly sealed, the product can be stored for up to 6 months from date of receipt.

**SOLUTIONS:** We recommend that stock solutions, once prepared, are stored aliquoted in tightly sealed vials at -20°C or below and used within 1 month. Wherever possible solutions should be made up and used on the same day.

### References:

Merck Index **11** 5633.

**Pinder et al** (1977) Maprotiline: A review of its pharmacological properties and therapeutic efficacy in mental depressive states. *Drugs* **13** 321. PMID: 326531.

**Pawlowski and Nowak** (1987) Biochemical and pharmacological tests for the prediction of ability of monoamine uptake blockers to inhibit the uptake of noradrenaline in-vivo: the effects of desipramine, maprotiline, femoxetine and citalopram. *J.Pharm.Pharmacol.* **39** 1003. PMID: 2894425.

**Rodgers et al** (1997) Behavioural effects in mice of subchronic chlordiazepoxide, maprotiline and fluvoxamine. II. The elevated plus-maze. *Pharmacol.Biochem.Behav.* **57** 127. PMID: 9164563.

Caution - Not Fully Tested • Research Use Only • Not For Human or Veterinary Use

### bio-techne.com

info@bio-techne.com

techsupport@bio-techne.com

### North America

Tel: (800) 343 7475

### China

info.cn@bio-techne.com

Tel: +86 (21) 52380373

### Europe Middle East Africa

Tel: +44 (0)1235 529449

### Rest of World

[www.tocris.com/distributors](http://www.tocris.com/distributors)

Tel: +1 612 379 2956