

Certificate of Analysis

www.tocris.com

Product Name: SC-9

Catalog No.: 0433

Batch No.: 3

CAS Number: 102649-78-5

IUPAC Name: 5-Chloro-N-(6-phenylhexyl)-1-naphthalenesulfonamide

1. PHYSICAL AND CHEMICAL PROPERTIES

Batch Molecular Formula: C₂₂H₂₄ClNO₂S

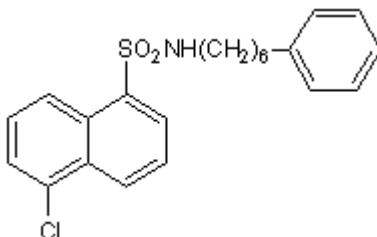
Batch Molecular Weight: 401.95

Physical Appearance: Off White solid

Solubility: ethanol to 25 mM
DMSO to 100 mM

Storage: Store at RT

Batch Molecular Structure:



2. ANALYTICAL DATA

HPLC: Shows 99.1% purity

¹H NMR: Consistent with structure

Mass Spectrum: Consistent with structure

| | Carbon | Hydrogen | Nitrogen |
|-------------|--------|----------|----------|
| Theoretical | 65.74 | 6.02 | 3.48 |
| Found | 65.8 | 6.03 | 3.41 |

Caution - Not Fully Tested • Research Use Only • Not For Human or Veterinary Use

Product Information

www.tocris.com

Product Name: SC-9

Catalog No.: 0433

Batch No.: 3

CAS Number: 102649-78-5

IUPAC Name: 5-Chloro-*N*-(6-phenylhexyl)-1-naphthalenesulfonamide

Description:

A potent activator of protein kinase C.

Physical and Chemical Properties:

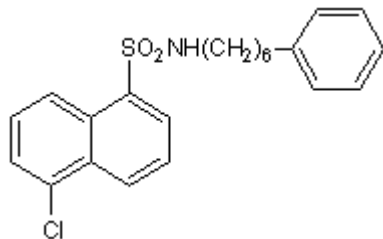
Batch Molecular Formula: C₂₂H₂₄ClNO₂S

Batch Molecular Weight: 401.95

Physical Appearance: Off White solid

Minimum Purity: >99%

Batch Molecular Structure:



Storage: Store at RT

Solubility & Usage Info:

ethanol to 25 mM

DMSO to 100 mM

Stability and Solubility Advice:

Some solutions can be difficult to obtain and can be encouraged by rapid stirring, sonication or gentle warming (in a 45-60°C water bath).

Information concerning product stability, particularly in solution, has rarely been reported and in most cases we can only offer a general guide. Our standard recommendations are:

SOLIDS: Provided storage is as stated on the product label and the vial is kept tightly sealed, the product can be stored for up to 6 months from date of receipt.

SOLUTIONS: We recommend that stock solutions, once prepared, are stored aliquoted in tightly sealed vials at -20°C or below and used within 1 month. Wherever possible solutions should be made up and used on the same day.

References:

Ito *et al* (1986) *N*-(6-Phenylhexyl)-5-chloro-1-naphthalenesulfonamide, a novel activator of protein kinase C. *Biochemistry* **25** 4179. PMID: 3756133.

Nishino *et al* (1986) *N*-(6-Phenylhexyl)-5-chloro-1-naphthalenesulfonamide is one of a new class of activators for Ca²⁺-activated, phospholipid-dependent protein kinase. *Biochim.Biophys.Acta.* **889** 236. PMID: 3778949.

Caution - Not Fully Tested • Research Use Only • Not For Human or Veterinary Use

bio-techne.com

info@bio-techne.com

techsupport@bio-techne.com

North America

Tel: (800) 343 7475

China

info.cn@bio-techne.com

Tel: +86 (21) 52380373

Europe Middle East Africa

Tel: +44 (0)1235 529449

Rest of World

www.tocris.com/distributors

Tel: +1 612 379 2956