

DESCRIPTION

Source	<i>E. coli</i> -derived	
	MFPAMPLSSLFVN	Human LR3 IGF-I (Gly49-Ala118 (Glu51Arg)) Accession # P05019
	N-terminus	C-terminus

N-terminal Sequence Analysis Met-Phe-Pro-Ala-Met-Pro-Leu-Ser-Ser-Leu

Predicted Molecular Mass 9 kDa

SPECIFICATIONS

SDS-PAGE 7 kDa, reducing conditions

Activity Measured in a serum-free cell proliferation assay using MCF-7 human breast cancer cells. Karey, K.P. *et al.* (1988) Cancer Research 48:4083.
The ED50 for this effect is 0.3-1.5 ng/mL. IGFBP-3 does not inhibit its activity.

Endotoxin Level <0.01 EU per 1 µg of the protein by the LAL method.

Purity >95%, by SDS-PAGE under reducing conditions and visualized by silver stain.

PREPARATION AND STORAGE

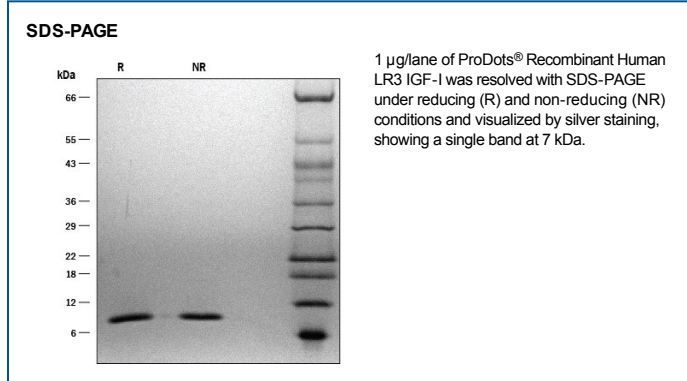
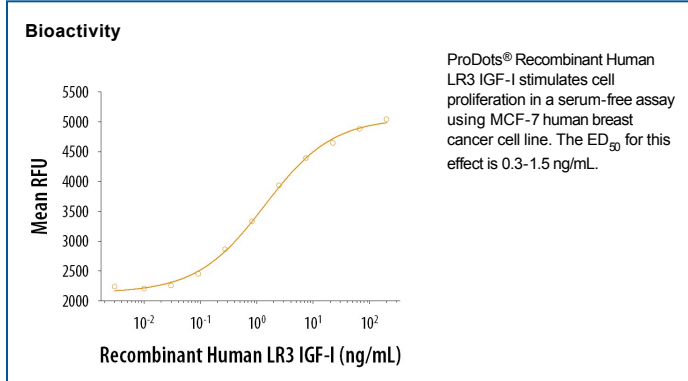
Reconstitution For a stock solution, reconstitute at 500 µg/mL in sterile PBS, or simply roll ProDot directly into cell culture medium for immediate use.

Shipping The product is shipped at ambient temperature. Upon receipt, store it immediately at the temperature recommended below.

Stability & Storage **Use a manual defrost freezer and avoid repeated freeze-thaw cycles.**

- 6 months from date of receipt at room temperature as supplied.
- 12 months from date of receipt at 2-8 °C as supplied.
- 1 month at 2-8 °C under sterile conditions after reconstitution.
- 3 months at -20 to -80 °C under sterile conditions after reconstitution.

DATA



PRODUCT SPECIFIC NOTICES

726253.1