

DESCRIPTION

Source *E. coli*-derived
Pro25 - Phe203
Accession # P09056

N-terminal Sequence Analysis Pro25

Predicted Molecular Mass 20 kDa

SPECIFICATIONS

SDS-PAGE 20 kDa, reducing conditions

Activity Measured by its ability to induce IL-6 secretion by M1 mouse myeloid leukemia cells.
The ED₅₀ is 0.1-0.6 ng/mL.

Endotoxin Level <0.10 EU per 1 µg of the protein by the LAL method.

Purity >95%, by SDS-PAGE under reducing conditions and visualized by silver stain.

PREPARATION AND STORAGE

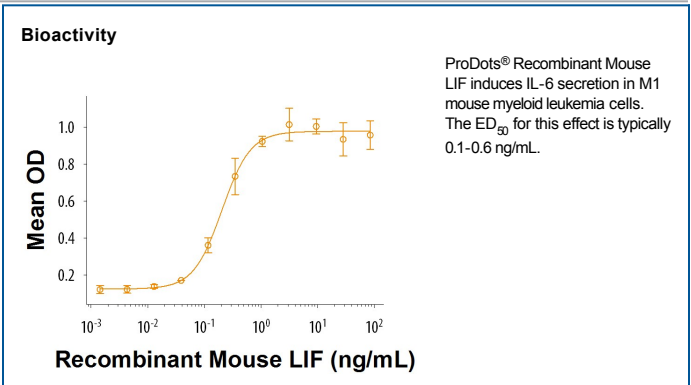
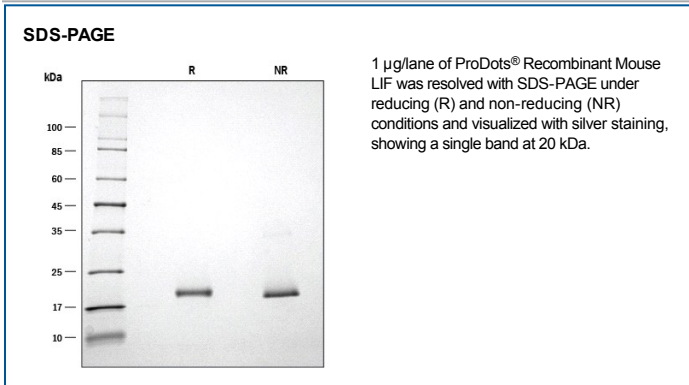
Reconstitution For a stock solution, reconstitute at 0.2-1 mg/mL in sterile PBS. For immediate use, simply roll ProDot® directly into cell culture medium.

Shipping The product is shipped at ambient temperature. Upon receipt, store it immediately at the temperature recommended below.

Stability & Storage **Use a manual defrost freezer and avoid repeated freeze-thaw cycles.**

- 6 months from date of receipt at room temperature as supplied.
- 12 months from date of receipt at 2-8 °C as supplied.
- 1 month at 2-8 °C under sterile conditions after reconstitution.
- 3 months at -20 to -80 °C under sterile conditions after reconstitution.

DATA



PRODUCT SPECIFIC NOTICES

727084.0