

DESCRIPTION

Source *E. coli*-derived
Cys37 - Ser208 & Gly41 - Ser208
Accession # O15520

N-terminal Sequence Analysis Cys37 & Gly41

Predicted Molecular Mass 19.5 kDa

SPECIFICATIONS

Activity Measured in a cell proliferation assay using 4MBr-5 rhesus monkey epithelial cells. Rubin, J.S. *et al.* (1989) Proc. Natl. Acad. Sci. USA 86:802.
The ED₅₀ for this effect is typically 20-100 ng/mL.

Endotoxin Level <0.01 EU per 1 µg of the protein by the LAL method.

Purity >97%, by SDS-PAGE under reducing conditions and visualized by silver stain.

PREPARATION AND STORAGE

Reconstitution For a stock solution, reconstitute at 100 µg/mL in sterile PBS, or simply roll ProDot® directly into cell culture medium for immediate use.

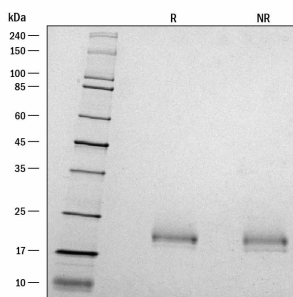
Shipping The product is shipped at ambient temperature. Upon receipt, store it immediately at the temperature recommended below.

Stability & Storage **Use a manual defrost freezer and avoid repeated freeze-thaw cycles.**

- 6 months from date of receipt at room temperature.
- 12 months from date of receipt at 2-8 °C as supplied.
- 1 month at 2-8 °C under sterile conditions after reconstitution.
- 3 months at -20 to -80 °C under sterile conditions after reconstitution.

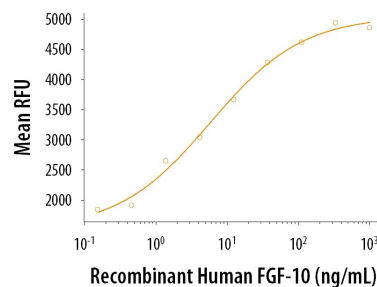
DATA

SDS-PAGE



1 µg/lane of ProDots® Recombinant Human FGF-10 was resolved with SDS-PAGE under reducing (R) and non-reducing (NR) conditions and visualized with silver staining, showing a single band at 21 kDa.

Bioactivity



ProDots® Recombinant Human FGF-10 stimulated cell proliferation of the 4MBr-5 rhesus monkey epithelial cell line. The ED₅₀ for this effect is typically 20-100 ng/mL.

PRODUCT SPECIFIC NOTICES

726884.0