

DESCRIPTION

Source Chinese Hamster Ovary cell line, CHO-derived
Gly311-Ser426
Accession # P08476

N-terminal Sequence Analysis Gly311

Structure / Form Disulfide-linked homodimer

Predicted Molecular Mass 13 kDa (monomer)

SPECIFICATIONS

SDS-PAGE 14 kDa, reducing conditions, 24 kDa, non-reducing conditions

Activity Measured by its ability to induce hemoglobin expression in K562 human chronic myelogenous leukemia cells. Schwall, R.H. *et al.* (1991) *Method Enzymol.* **198**:340.
The ED₅₀ for this effect is typically 0.2-1.2 ng/mL.

Endotoxin Level <0.01 EU per 1 µg of the protein by the LAL method.

PREPARATION AND STORAGE

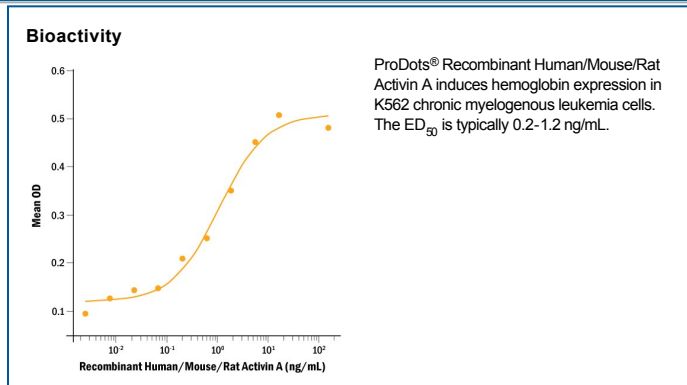
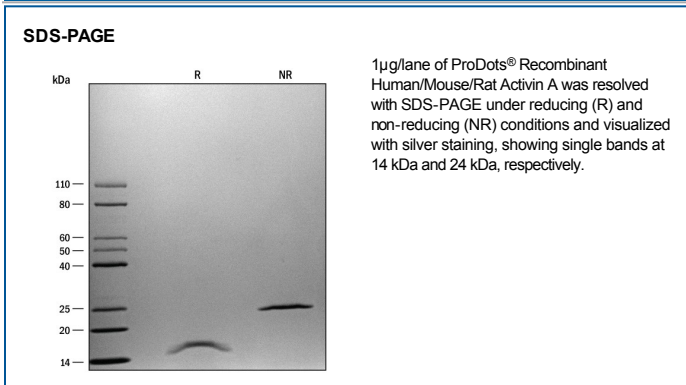
Reconstitution For a stock solution, reconstitute at 100 µg/mL in 4 mM HCl, or simply roll ProDot® directly into cell culture medium for immediate use.

Shipping The product is shipped at ambient temperature. Upon receipt, store it immediately at the temperature recommended below.

Stability & Storage Use a manual defrost freezer and avoid repeated freeze-thaw cycles.

- 6 months from date of receipt at room temperature as supplied.
- 12 months from date of receipt at 2-8 °C as supplied.
- 1 month at 2-8 °C under sterile conditions after reconstitution.
- 3 months at -20 to -80 °C under sterile conditions after reconstitution.

DATA



PRODUCT SPECIFIC NOTICES

726214.5