

DESCRIPTION

Source *E. coli*-derived
Glu33 - Ser190, with an N-terminal Met
Accession # NP_757350

N-terminal Sequence Analysis Met

Predicted Molecular Mass 18.5 kDa (monomer)

SPECIFICATIONS

Activity Measured in a cell proliferation assay using M-NFS-60 mouse myelogenous leukemia lymphoblast cells. Nakoinz, I. *et al.* (1990) J. Immunol. 145:860.
The ED₅₀ for this effect is typically 0.5-1.5 ng/mL.

Endotoxin Level <0.10 EU per 1 µg of the protein by the LAL method.

Purity >97%, by SDS-PAGE under reducing conditions and visualized by silver stain.

PREPARATION AND STORAGE

Reconstitution For a stock solution, reconstitute at 50-500 µg/mL in sterile PBS, or simply roll ProDot® directly into cell culture medium.

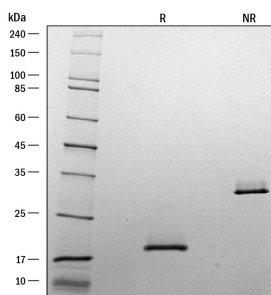
Shipping The product is shipped at ambient temperature. Upon receipt, store it immediately at the temperature recommended below.

Stability & Storage **Use a manual defrost freezer and avoid repeated freeze-thaw cycles.**

- 6 months from date of receipt at room temperature.
- 12 months from date of receipt at 2-8 °C as supplied.
- 1 month at 2-8 °C under sterile conditions after reconstitution.
- 3 months at -20 to -80 °C under sterile conditions after reconstitution.

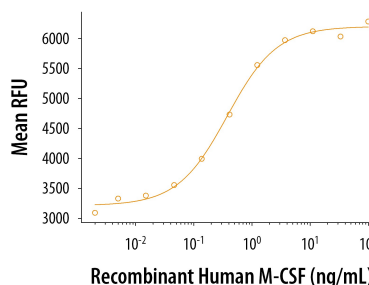
DATA

SDS-PAGE



1 µg/lane of ProDots® Recombinant Human M-CSF was resolved with SDS-PAGE under reducing (R) and non-reducing (NR) conditions and visualized with silver staining, showing bands at 19 kDa and 35 kDa, respectively.

Bioactivity



ProDots® Recombinant Human M-CSF stimulates cell proliferation of the M-NFS-60 mouse myelogenous leukemia lymphoblast cell line in a dose-dependent manner. The ED₅₀ for this effect is typically 0.5-1.5 ng/mL.

PRODUCT SPECIFIC NOTICES

726881.0