

**DESCRIPTION**

**Source** *E. coli*-derived  
Ala18 - Glu144  
Accession # CAA26822

**N-terminal Sequence Analysis** Ala18

**Predicted Molecular Mass** 14 kDa

**SPECIFICATIONS**

**SDS-PAGE** 14 kDa, reducing conditions

**Activity** Measured in a cell proliferation assay using TF-1 human erythroleukemic cells. Kitamura, T. *et al.* (1989) J. Cell Physiol. **140**:323. The ED<sub>50</sub> for this effect is 6-30 pg/mL.

**Endotoxin Level** <0.10 EU per 1 µg of the protein by the LAL method.

**Purity** >97%, by SDS-PAGE under reducing conditions and visualized by silver stain.

**PREPARATION AND STORAGE**

**Reconstitution** For a stock solution, reconstitute at 100 µg/mL in PBS containing ≥ 0.1% human or bovine serum albumin, or simply roll ProDot® directly into cell culture medium for immediate use.

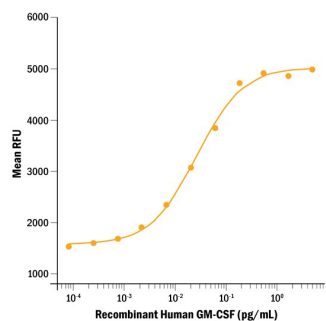
**Shipping** The product is shipped at ambient temperature. Upon receipt, store it immediately at the temperature recommended below.

**Stability & Storage** Use a manual defrost freezer and avoid repeated freeze-thaw cycles.

- 6 months from date of receipt at room temperature as supplied.
- 12 months from date of receipt at 2-8 °C as supplied.
- 1 month at 2-8 °C under sterile conditions after reconstitution.
- 3 months at -20 to -70 °C under sterile conditions after reconstitution.

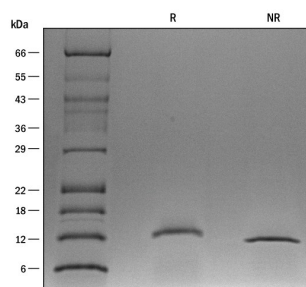
**DATA**

**Bioactivity**



ProDots Recombinant Human GM-CSF stimulates cell proliferation of the TF-1 human erythroleukemic cell line. The ED<sub>50</sub> for this effect is 6-30 pg/mL.

**SDS-PAGE**



1 µg/lane of ProDots® Recombinant Human GM-CSF was resolved with SDS-PAGE under reducing (R) and non-reducing (NR) conditions and visualized with silver staining, showing a single band at approximately 14 kDa.

**PRODUCT SPECIFIC NOTICES**

726218.3