

DESCRIPTION

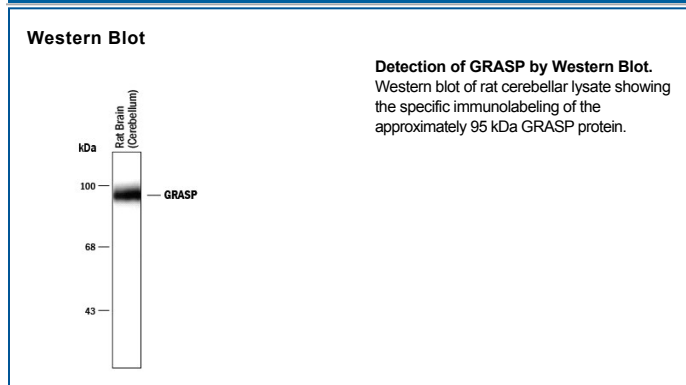
Species Reactivity	Human/Mouse/Rat/Bovine/Canine
Specificity	This antibody is specific for the 95 kDa GRASP in Western blots of rat cerebellar lysates.
Source	Polyclonal Rabbit IgG
Purification	Antigen Affinity-purified
Immunogen	Peptide corresponding to amino acid residues from the C-terminal region of rat GRASP, conjugated to keyhole limpet hemocyanin (KLH)
Formulation	100 µL in 10 mM HEPES (pH 7.5), 150 mM NaCl, 100 µg/mL BSA and 50% glycerol. See Certificate of Analysis for details.

APPLICATIONS

Please Note: Optimal dilutions should be determined by each laboratory for each application. *General Protocols* are available in the *Technical Information* section on our website.

	Recommended Concentration	Sample
Western Blot	1:1000 dilution	See Below

DATA



PREPARATION AND STORAGE

Shipping	The product is shipped with polar packs. Upon receipt, store it immediately at the temperature recommended below.
Stability & Storage	For long-term storage, ≤-20° C is recommended. Product is stable at ≤ -20° C for at least 1 year.

BACKGROUND

PDZ domain-containing proteins, such as PSD-95 and GRIP are thought to play key roles in glutamate receptor plasticity. GRIP-associated proteins (GRASPs) that bind to distinct PDZ domains within GRIP also play key roles in regulation of glutamate receptor function. GRASP-1 is a neuronal rasGEF associated with GRIP and AMPA receptors *in vivo*. Recent work suggests that GRASP-1 may regulate neuronal ras signaling and contribute to the regulation of AMPA receptor distribution by NMDA receptor activity.

References:

1. Scannevin, R.H. and R.L. Huganir (2000) *Nat. Rev. Neurosci.* 1:133.
2. Ye, B. *et al.* (2000) *Neuron* 26:603.