

ORDERING INFORMATION

Catalog Number: PA-ST4

Lot Number: RT03

Size: 200 μ L

Storage: -20° C

Specificity: STAT4

Antigen: aa 730 - 749 of murine STAT4

Host: Rabbit

Applications: Western blot
Immunoprecipitation

Preparation

Rabbits were immunized with the synthetic peptide RENLSPTTIETAMNSPYSAE which corresponds to amino acids 730 - 749 of murine STAT4.

Formulation

Lyophilized from 0.2 mL antiserum containing 0.02% sodium azide.

Reconstitution

Dissolve in 0.2 mL water.

Storage

Avoid repeated freezing and thawing by aliquoting smaller portions of the reconstituted serum into Eppendorf tubes and storing at -20° C or -70° C **in a manual defrost freezer.**

Specificity

The anti-serum is known to react with human and murine STAT4. This anti-serum does not cross-react with any of the other Stat proteins.

Western blot

A 1:2,000 dilution of the reconstituted anti-serum is recommended.

Immunoprecipitation

3 - 6 μ L per immunoprecipitation of STAT4 from 10^6 - 10^7 cells is recommended.

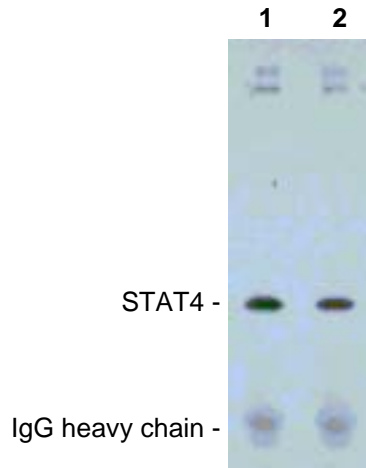


Figure:

Western blot of STAT4 immunoprecipitated from 7×10^6 human peripheral blood lymphocytes with 3 μ L (lane 1) or 6 μ L (lane 2) of antiserum. Proteins were electrophoresed on 5 - 15% polyacrylamide gels and immunoreactive proteins were detected by the ECL system (Amersham) procedure. All procedures are described on the following page.

FOR RESEARCH USE ONLY. NOT FOR USE IN HUMANS.
Inc.

R&D Systems,

1-800-343-7475

Protocols for Immunoprecipitation and Immunoblotting with anti-STAT4:

Cell lysis for immunoprecipitations:

Cells, grown in suspension, are rinsed three times with phosphate buffered saline by centrifugation. Cell protein is extracted by solubilizing the cell pellet at 1×10^6 - 1×10^7 cells per mL of cold extraction buffer (20 mM Tris, pH 7.5, 150 mM NaCl, 2 mM EDTA, 1% NP-40, 0.02% NaN_3 , 10 mM NaF, 1 mM sodium ortho-vanadate, 0.25 mM phenylmethylsulfonyl fluoride, 1 $\mu\text{g}/\text{ml}$ proteinin, 1 $\mu\text{g}/\text{ml}$ leupeptin, and 1 $\mu\text{g}/\text{ml}$ chymostatin) and rocking the mixture at 2 - 8° C for 30 - 60 minutes. The lysate is then centrifuged at 12,000 x g for 5 minutes to remove insoluble material. One mL of cell lysate is precleared by incubation with 10 μL of a 20% suspension of fixed Staph A cells (Immunoprecipitin, BRL/Gibco) for 5 minutes on ice. Staph A cells are pelleted by centrifugation at 12,000 x g for 0.5 minute in an Eppendorf centrifuge, the supernatant is transferred to a new tube, and the preclearing is repeated one or more times. The Staph A cells had been washed three times with extraction buffer before being added to the extracts.

Immunoprecipitation:

Rabbit anti-STAT4 is added to the 1 mL extract and the mixture is rocked for 1 hour at 2 - 8° C. Staph A cells (25 μl of a 20% suspension) are then added and the mixture is rocked in the cold for another hour. The Staph A-absorbed complexes are centrifuged for 0.5 minutes in an Eppendorf centrifuge, resuspended in extraction buffer by trituration with a glass Pasteur pipet, and then pelleted. The complexes are washed a total of four times with extraction buffer, and then suspended in phosphate buffered saline and transferred to a new tube before the final centrifugation. The washed pellet is suspended in 25 μl of 2x SDS gel sample buffer (20 mM dithiothreitol, 6% SDS, 0.25 M Tris, pH 6.8, 10% glycerol, and bromophenyl blue) by vortexing and then incubated for 3 minutes in a boiling water bath. Staph A cells are pelleted and the supernatant is loaded on a polyacrylamide gel.

Total cell lysates for immunoblotting:

The cell pellet is solubilized in hot 2x SDS gel sample buffer at 1×10^7 - 1×10^8 cells per mL and heated in a boiling water bath for 5 minutes. When the material is too viscous to pipet, it is sonicated for 10 - 20 seconds. Samples are diluted with 1x SDS sample buffer to the desired concentration.

Western blotting:

Proteins, electrophoresed on 14 cm x 9 cm x 1.5 mm, 5-15% polyacrylamide gradient gels, are transferred to Immobilon filters (Millipore) at room temperature at 250 mA per slab for 1 hour on a MilliBlot-Graphite Electroblotter II (Millipore). After blocking with 3% BSA in TBS (50 mM Tris, pH 7.4, 0.5 M NaCl, 0.05% Tween 20) for 1 hour at room temperature, the membrane is incubated overnight at 2 - 8° C in TBS containing 1% BSA and a 1 : 2,000 dilution of rabbit anti-STAT4 serum. The membrane is washed for 1 hour with 5 or more changes of TBS and then incubated with TBS containing 1% BSA and a 1 : 1,000 dilution of HRP-conjugated protein A (Amersham) for 1 hour at room temperature. The filter is washed as described for the primary antibody and immunodetected bands are visualized with the ECL system of Amersham.