

DESCRIPTION

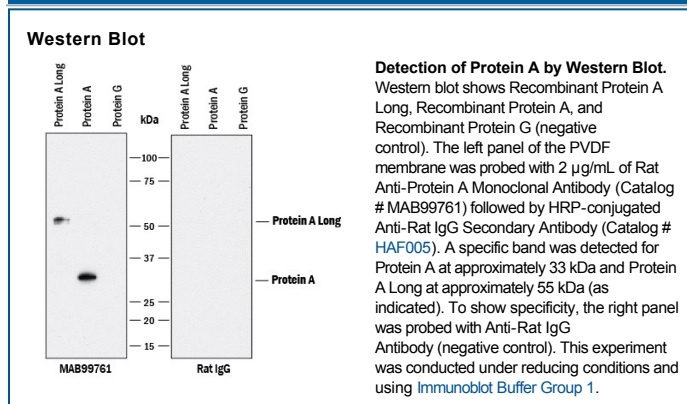
Specificity	Detects recombinant Protein A in direct ELISA and Western blots.
Source	Monoclonal Rat IgG _{2A} Clone # 946418
Purification	Protein A or G purified from hybridoma culture supernatant
Immunogen	Recombinant Protein A
Formulation	Lyophilized from a 0.2 µm filtered solution in PBS with Trehalose. See Certificate of Analysis for details. *Small pack size (-SP) is supplied either lyophilized or as a 0.2 µm filtered solution in PBS.

APPLICATIONS

Please Note: Optimal dilutions should be determined by each laboratory for each application. *General Protocols* are available in the *Technical Information* section on our website.

	Recommended Concentration	Sample
Western Blot	2 µg/mL	See Below

DATA



PREPARATION AND STORAGE

Reconstitution	Reconstitute at 0.5 mg/mL in sterile PBS.
Shipping	The product is shipped at ambient temperature. Upon receipt, store it immediately at the temperature recommended below. *Small pack size (-SP) is shipped with polar packs. Upon receipt, store it immediately at -20 to -70 °C
Stability & Storage	Use a manual defrost freezer and avoid repeated freeze-thaw cycles. <ul style="list-style-type: none"> ● 12 months from date of receipt, -20 to -70 °C as supplied. ● 1 month, 2 to 8 °C under sterile conditions after reconstitution. ● 6 months, -20 to -70 °C under sterile conditions after reconstitution.

BACKGROUND

The recombinant Protein A is a genetically engineered protein containing 5 IgG-binding regions of protein A. Cell wall binding region, cell membrane binding region and albumin binding region have been removed from the recombinant Protein A to ensure the maximum specific IgG binding. The recombinant Protein A is used in purification of polyclonal or monoclonal IgG antibodies. Protein A binds to various human, mouse and rat IgG subclasses (e.g., human IgG1, IgG2, IgG4; mouse IgG2a, IgG2b, IgG3; rat IgG2c). It also binds to total IgG from rabbit, guinea pig, pig, dog and cat.