

DESCRIPTION

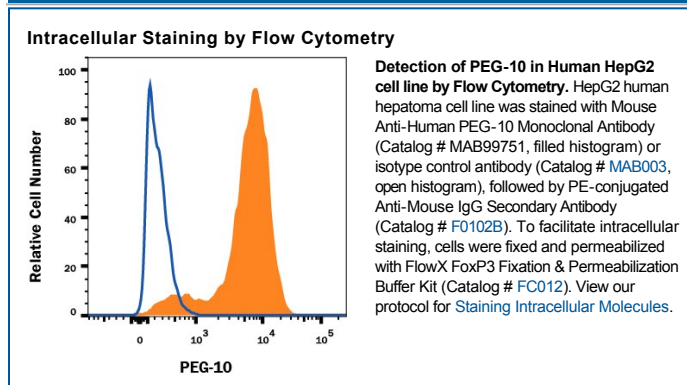
| | |
|---------------------------|---------------------------------------------------------------------------------------------------------------------------------------------------------------------------------------------------------------|
| Species Reactivity | Human |
| Specificity | Detects human PEG10 in direct ELISAs. |
| Source | Monoclonal Mouse IgG _{2A} Clone # 981902 |
| Purification | Protein A or G purified from hybridoma culture supernatant |
| Immunogen | Synthetic peptide containing human PEG10 Accession # Q86TG7 |
| Formulation | Lyophilized from a 0.2 µm filtered solution in PBS with Trehalose. See Certificate of Analysis for details. *Small pack size (-SP) is supplied either lyophilized or as a 0.2 µm filtered solution in PBS. |

APPLICATIONS

Please Note: Optimal dilutions should be determined by each laboratory for each application. *General Protocols* are available in the *Technical Information* section on our website.

| | Recommended Concentration | Sample |
|-------------------------------------------------|------------------------------------------------------------------------------------------------------------------------------------------------------------------------------------------------------------------------------------------------------|---------------|
| Intracellular Staining by Flow Cytometry | 0.25 µg/10 ⁶ cells | See Below |
| CyTOF-ready | Ready to be labeled using established conjugation methods. No BSA or other carrier proteins that could interfere with conjugation. | |
| ELISA | This antibody functions as an ELISA capture antibody when paired with Mouse Anti-Human PEG10 Monoclonal Antibody (Catalog # MAB99751). <i>This product is intended for assay development on various assay platforms requiring antibody pairs.</i> | |

DATA



PREPARATION AND STORAGE

| | |
|--------------------------------|----------------------------------------------------------------------------------------------------------------------------------------------------------------------------------------------------------------------------------------------------------------------------------------------------------------------------------------------------------|
| Reconstitution | Reconstitute at 0.5 mg/mL in sterile PBS. |
| Shipping | The product is shipped at ambient temperature. Upon receipt, store it immediately at the temperature recommended below. *Small pack size (-SP) is shipped with polar packs. Upon receipt, store it immediately at -20 to -70 °C |
| Stability & Storage | Use a manual defrost freezer and avoid repeated freeze-thaw cycles. <ul style="list-style-type: none"> ● 12 months from date of receipt, -20 to -70 °C as supplied. ● 1 month, 2 to 8 °C under sterile conditions after reconstitution. ● 6 months, -20 to -70 °C under sterile conditions after reconstitution. |

BACKGROUND

Paternally Expressed Gene-10, or PEG10 (a.k.a Retrotransposon-derived protein PEG10, EDR, MART2, MEF3L1 and RGAG3) is a 708 amino acids (aa) protein encoded by the PEG10 gene. PEG-10 Inhibits the TGF-beta signaling by interacting with the TGF-beta receptor ALK1, possibly playing a key role in epithelial-mesenchymal transition (EMT). PEG-10 has been suggested to participate in cell proliferation, differentiation and cell apoptosis processes and identified as a prognostic biomarker for progression of several carcinomas, like breast, lung, liver and pancreatic carcinomas.