

DESCRIPTION

Species Reactivity	Human
Specificity	Detects human LPAR1/LPA ₁ /EDG-2 in direct ELISAs.
Source	Monoclonal Mouse IgG ₁ Clone # 999807
Purification	Protein A or G purified from hybridoma culture supernatant
Immunogen	<i>E. coli</i> -derived recombinant human LPAR1/LPA ₁ /EDG-2 Met1-Lys50 Accession # Q92633
Formulation	Lyophilized from a 0.2 µm filtered solution in PBS with Trehalose. See Certificate of Analysis for details. *Small pack size (-SP) is supplied either lyophilized or as a 0.2 µm filtered solution in PBS.

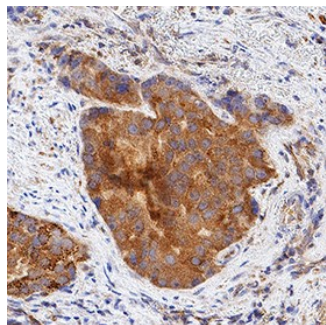
APPLICATIONS

Please Note: Optimal dilutions should be determined by each laboratory for each application. [General Protocols](#) are available in the Technical Information section on our website.

	Recommended Concentration	Sample
Immunohistochemistry	5-25 µg/mL	See Below

DATA

Immunohistochemistry



LPAR1/LPA₁/EDG-2 in Human Prostate Cancer Tissue. LPAR1/LPA₁/EDG-2 was detected in immersion fixed paraffin-embedded sections of human prostate cancer tissue using Mouse Anti-Human LPAR1/LPA₁/EDG-2 Monoclonal Antibody (Catalog # MAB9963) at 5 µg/mL for 1 hour at room temperature followed by incubation with the Anti-Mouse IgG VisUCyte™ HRP Polymer Antibody (Catalog # VC001). Before incubation with the primary antibody, tissue was subjected to heat-induced epitope retrieval using Antigen Retrieval Reagent-Basic (Catalog # CTS013). Tissue was stained using DAB (brown) and counterstained with hematoxylin (blue). Specific staining was localized to cell surfaces and cytoplasm in cancer cells. View our protocol for [IHC Staining with VisUCyte HRP Polymer Detection Reagents](#).

PREPARATION AND STORAGE

Reconstitution	Reconstitute at 0.5 mg/mL in sterile PBS.
Shipping	The product is shipped at ambient temperature. Upon receipt, store it immediately at the temperature recommended below. *Small pack size (-SP) is shipped with polar packs. Upon receipt, store it immediately at -20 to -70 °C
Stability & Storage	Use a manual defrost freezer and avoid repeated freeze-thaw cycles. <ul style="list-style-type: none"> • 12 months from date of receipt, -20 to -70 °C as supplied. • 1 month, 2 to 8 °C under sterile conditions after reconstitution. • 6 months, -20 to -70 °C under sterile conditions after reconstitution.

BACKGROUND

Lysophosphatidic acid receptor 1, LPAR1, also known as EDG-2, is a G protein-coupled receptor that binds the lipid signaling molecule lysophosphatidic acid (LPA). EDG molecules are G protein-coupled receptors that bind plasma lysophospholipids. The EDG family consists of two subfamilies; the S1P (sphingosine-1-phosphate) subfamily consisting of EDG-1, 3, 5, 6, and 8, and the LPA subfamily that contains EDG-2, 4 and 7. The S1P family regulates essential cellular processes such as proliferation, migration, cytoskeletal organization, and differentiation.