

DESCRIPTION

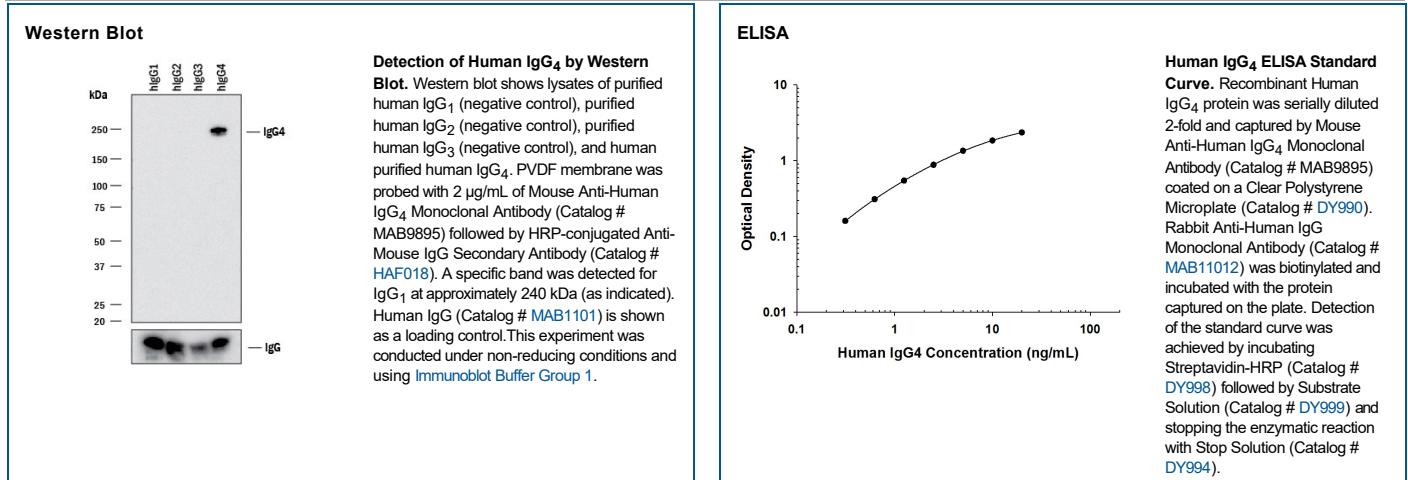
Species Reactivity	Human
Specificity	Detects human IgG ₄ in direct ELISAs.
Source	Monoclonal Mouse IgG _{2A} Clone # 985547
Purification	Protein A or G purified from hybridoma culture supernatant
Immunogen	Purified IgG ₄ from normal human plasma
Formulation	Lyophilized from a 0.2 μm filtered solution in PBS with Trehalose. See Certificate of Analysis for details. *Small pack size (-SP) is supplied either lyophilized or as a 0.2 μm filtered solution in PBS.

APPLICATIONS

Please Note: Optimal dilutions should be determined by each laboratory for each application. [General Protocols](#) are available in the Technical Information section on our website.

	Recommended Concentration	Sample
Western Blot	2 μg/mL	See Below
ELISA	This antibody functions as an ELISA capture antibody when paired with Rabbit Anti-Human IgG Monoclonal Antibody (Catalog # MAB11012). <i>This product is intended for assay development on various assay platforms requiring antibody pairs.</i>	

DATA



PREPARATION AND STORAGE

Reconstitution	Reconstitute at 0.5 mg/mL in sterile PBS.
Shipping	The product is shipped at ambient temperature. Upon receipt, store it immediately at the temperature recommended below. *Small pack size (-SP) is shipped with polar packs. Upon receipt, store it immediately at -20 to -70 °C
Stability & Storage	Use a manual defrost freezer and avoid repeated freeze-thaw cycles. <ul style="list-style-type: none"> • 12 months from date of receipt, -20 to -70 °C as supplied. • 1 month, 2 to 8 °C under sterile conditions after reconstitution. • 6 months, -20 to -70 °C under sterile conditions after reconstitution.