

DESCRIPTION

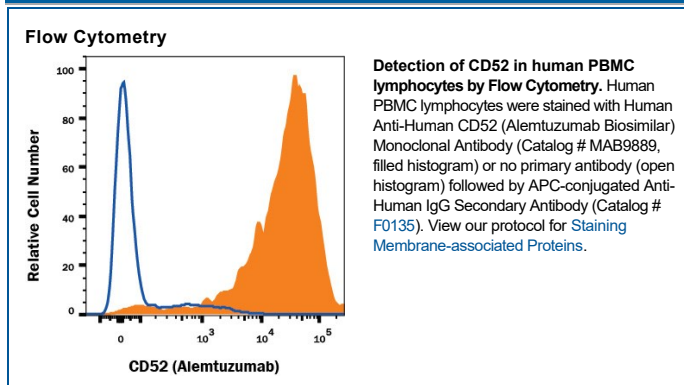
Species Reactivity	Human
Specificity	Detects human CD52 based on Alemtuzumab therapeutic antibody. This non-therapeutic antibody uses the same variable region sequence as the therapeutic antibody Alemtuzumab. This product is for research use only.
Source	Recombinant Monoclonal Human IgG ₁ Clone # Hu116
Purification	Protein A or G purified from cell culture supernatant
Immunogen	Human CD52
Endotoxin Level	<0.10 EU per 1 µg of the antibody by the LAL method.
Formulation	Lyophilized from a 0.2 µm filtered solution in PBS with Trehalose. See Certificate of Analysis for details. *Small pack size (-SP) is supplied either lyophilized or as a 0.2 µm filtered solution in PBS.

APPLICATIONS

Please Note: Optimal dilutions should be determined by each laboratory for each application. [General Protocols](#) are available in the Technical Information section on our website.

	Recommended Concentration	Sample
Flow Cytometry	0.25 µg/10 ⁶ cells	See Below
CyTOF-ready	Ready to be labeled using established conjugation methods. No BSA or other carrier proteins that could interfere with conjugation.	

DATA



PREPARATION AND STORAGE

Reconstitution	Reconstitute at 0.5 mg/mL in sterile PBS.
Shipping	The product is shipped at ambient temperature. Upon receipt, store it immediately at the temperature recommended below. *Small pack size (-SP) is shipped with polar packs. Upon receipt, store it immediately at -20 to -70 °C
Stability & Storage	Use a manual defrost freezer and avoid repeated freeze-thaw cycles. <ul style="list-style-type: none"> • 12 months from date of receipt, -20 to -70 °C as supplied. • 1 month, 2 to 8 °C under sterile conditions after reconstitution. • 6 months, -20 to -70 °C under sterile conditions after reconstitution.

BACKGROUND

Alemtuzumab is a biosimilar directed against the extracellular domain of CD52. The biotinylated antibody (catalog number FAB9889B) can be used in flow cytometry or various assay format to measure CD52 expression and can be detected by conjugated streptavidin.