

DESCRIPTION	
Species Reactivity	Human
Specificity	Detects human IgD in Flow Cytometry.
Source	Monoclonal Mouse IgG _{2A} Clone # IA6-2
Purification	Protein A or G purified from hybridoma culture supernatant
Immunogen	Human IgD
Formulation	Lyophilized from a 0.2 µm filtered solution in PBS with Trehalose. See Certificate of Analysis for details. *Small pack size (-SP) is supplied either lyophilized or as a 0.2 µm filtered solution in PBS.

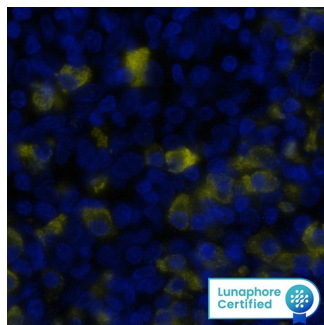
APPLICATIONS

Please Note: Optimal dilutions should be determined by each laboratory for each application. [General Protocols](#) are available in the Technical Information section on our website.

	Recommended Concentration	Sample
Flow Cytometry	0.25 µg/10 ⁶ cells	See Below
Multiplex Immunofluorescence	0.5 µg/mL	Immersion fixed paraffin-embedded sections of human tonsil tissue
Immunohistochemistry	3-25 µg/mL	Immersion fixed paraffin-embedded sections of human tonsil
CyTOF-ready	Ready to be labeled using established conjugation methods. No BSA or other carrier proteins that could interfere with conjugation.	

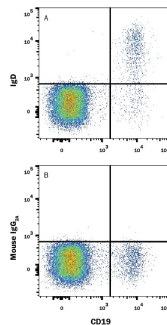
DATA

Multiplex Immunofluorescence



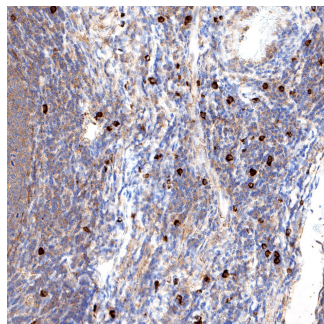
Detection of IgD in Human Tonsil via seqIF™ staining on COMET™ IgD Antibody was detected in immersion fixed paraffin-embedded sections of human Tonsil using Mouse Anti-Human IgD, Monoclonal Antibody (Catalog # MAB9857) at 0.5µg/mL at 37 ° Celsius for 2 minutes. Before incubation with the primary antibody, tissue underwent an all-in-one dewaxing and antigen retrieval preprocessing using PreTreatment Module (PT Module) and Dewax and HIER Buffer H (pH 9; Epredia Catalog # TA-999-DHBH). Tissue was stained using the Alexa Fluor™ 555 Goat anti-Mouse IgG Secondary Antibody at 1:100 at 37 ° Celsius for 2 minutes. (Yellow; Lunaphore Catalog # DR555MS) and counterstained with DAPI (blue; Lunaphore Catalog # DR100). Specific staining was localized to the cytoplasm. Protocol available in [COMET™ Panel Builder](#).

Flow Cytometry



Detection of IgD in Human PBMCs by Flow Cytometry. Human peripheral blood mononuclear cells (PBMCs) were stained with Mouse Anti-Human CD19 PE-conjugated Monoclonal Antibody (Catalog # FAB4867P) and either (A) Mouse Anti-Human IgD Monoclonal Antibody (Catalog # MAB9857) or (B) Mouse IgG_{2A} Isotype Control (Catalog # MAB003) followed by Allophycocyanin-conjugated Anti-Mouse IgG Secondary Antibody (Catalog # F010B). View our protocol for [Staining Membrane-associated Proteins](#).

Immunohistochemistry



Detection of IgD in Human Tonsil. IgD was detected in immersion fixed paraffin-embedded sections of human tonsil using Mouse Anti-Human IgD Monoclonal Antibody (Catalog # MAB9857) at 5 µg/ml for 1 hour at room temperature followed by incubation with the HRP-conjugated Anti-Mouse IgG Secondary Antibody (Catalog # HAF007) or the Anti-Mouse IgG VisUCyte™ HRP Polymer Antibody (Catalog # VC001). Before incubation with the primary antibody, tissue was subjected to heat-induced epitope retrieval using VisUCyte Antigen Retrieval Reagent-Basic (Catalog # VCTS021). Tissue was stained using DAB (brown) and counterstained with hematoxylin (blue). Specific staining was localized to the membrane of B cells. View our protocol for [Chromogenic IHC Staining of Paraffin-embedded Tissue Sections](#).

PREPARATION AND STORAGE

Reconstitution	Reconstitute at 0.5 mg/mL in sterile PBS. For liquid material, refer to CoA for concentration.
Shipping	Lyophilized product is shipped at ambient temperature. Liquid small pack size (-SP) is shipped with polar packs. Upon receipt, store immediately at the temperature recommended below.
Stability & Storage	<p>Use a manual defrost freezer and avoid repeated freeze-thaw cycles.</p> <ul style="list-style-type: none"> • 12 months from date of receipt, -20 to -70 °C as supplied. • 1 month, 2 to 8 °C under sterile conditions after reconstitution. • 6 months, -20 to -70 °C under sterile conditions after reconstitution.

BACKGROUND

Immunoglobulin D (IgD) is an antibody isotype typically expressed in the plasma membranes of naïve B cells, usually co-expressed with IgM. IgD is also found secreted in small amounts in serum. Secreted IgD is produced as a monomeric antibody with two heavy chains of the delta class, and two Ig light chains.

