

DESCRIPTION

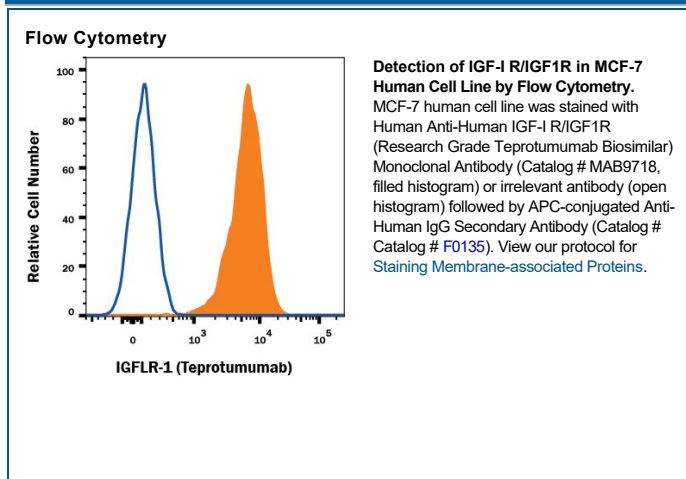
Species Reactivity	Human
Specificity	Detects human IGF-I R/IGF1R based on Teprotumumab therapeutic antibody. This non-therapeutic antibody uses the same variable region sequence as the therapeutic antibody Teprotumumab. This product is for research use only.
Source	Recombinant Monoclonal Human IgG ₁ Clone # Hu14
Purification	Protein A or G purified from cell culture supernatant
Immunogen	Human IGF-I R/IGF1R
Endotoxin Level	<0.10 EU per 1 µg of the antibody by the LAL method.
Formulation	Lyophilized from a 0.2 µm filtered solution in PBS with Trehalose. See Certificate of Analysis for details. *Small pack size (-SP) is supplied either lyophilized or as a 0.2 µm filtered solution in PBS.

APPLICATIONS

Please Note: Optimal dilutions should be determined by each laboratory for each application. *General Protocols* are available in the *Technical Information* section on our website.

	Recommended Concentration	Sample
Flow Cytometry	0.25 µg/10 ⁶ cells	See Below

DATA



PREPARATION AND STORAGE

Reconstitution	Reconstitute at 0.5 mg/mL in sterile PBS.
Shipping	The product is shipped at ambient temperature. Upon receipt, store it immediately at the temperature recommended below. *Small pack size (-SP) is shipped with polar packs. Upon receipt, store it immediately at -20 to -70 °C
Stability & Storage	Use a manual defrost freezer and avoid repeated freeze-thaw cycles. <ul style="list-style-type: none"> • 12 months from date of receipt, -20 to -70 °C as supplied. • 1 month, 2 to 8 °C under sterile conditions after reconstitution. • 6 months, -20 to -70 °C under sterile conditions after reconstitution.

BACKGROUND

Teprotumumab is a biosimilar directed against the extracellular domain of IGF-I R/IGF1R. This product constitutes the immunogen used for the anti-Idiotypic catalog number MAB9634.