

## DESCRIPTION

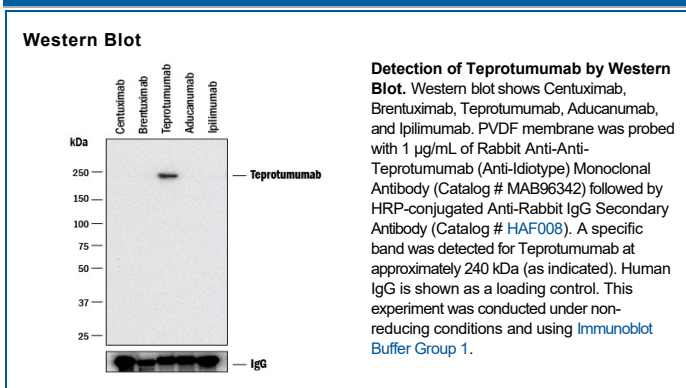
<b>Specificity</b>	Detects Teprotumumab in Western blots and direct ELISAs. No cross-reactivity with Cetuximab, Brentuximab, Aducanumab, and Ipilimumab is observed.
<b>Source</b>	Recombinant Monoclonal Rabbit IgG Clone # 2373A
<b>Purification</b>	Protein A or G purified from cell culture supernatant
<b>Immunogen</b>	Full-length Teprotumumab
<b>Formulation</b>	Lyophilized from a 0.2 µm filtered solution in PBS with Trehalose. See Certificate of Analysis for details. *Small pack size (-SP) is supplied either lyophilized or as a 0.2 µm filtered solution in PBS.

## APPLICATIONS

**Please Note:** Optimal dilutions should be determined by each laboratory for each application. *General Protocols* are available in the *Technical Information* section on our website.

	<b>Recommended Concentration</b>	<b>Sample</b>
<b>Western Blot</b>	1 µg/mL	See Below

## DATA



## PREPARATION AND STORAGE

<b>Reconstitution</b>	Reconstitute at 0.5 mg/mL in sterile PBS.
<b>Shipping</b>	The product is shipped at ambient temperature. Upon receipt, store it immediately at the temperature recommended below. *Small pack size (-SP) is shipped with polar packs. Upon receipt, store it immediately at -20 to -70 °C
<b>Stability &amp; Storage</b>	<p><b>Use a manual defrost freezer and avoid repeated freeze-thaw cycles.</b></p> <ul style="list-style-type: none"> <li>• 12 months from date of receipt, -20 to -70 °C as supplied.</li> <li>• 1 month, 2 to 8 °C under sterile conditions after reconstitution.</li> <li>• 6 months, -20 to -70 °C under sterile conditions after reconstitution.</li> </ul>

## BACKGROUND

The anti-Teprotumumab antibody is an anti-Idiotypic antibody raised against and selected for the antigenic determinants of the variable region of Teprotumumab. The antibody has been tested against a broad range of other biosimilars to ensure specificity. This highly specialized anti-idiotypic antibody can be used in a variety of pharmacokinetic (PK) assay formats.