

## DESCRIPTION

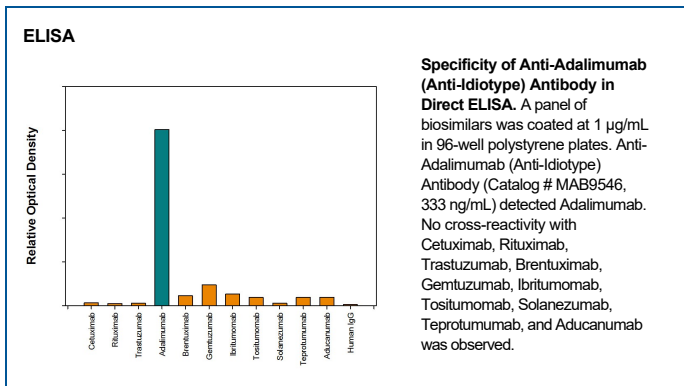
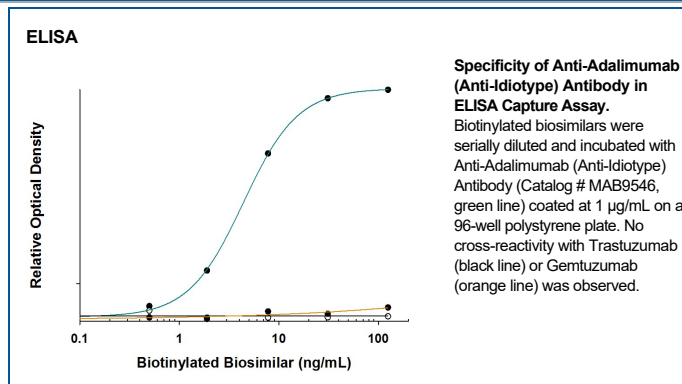
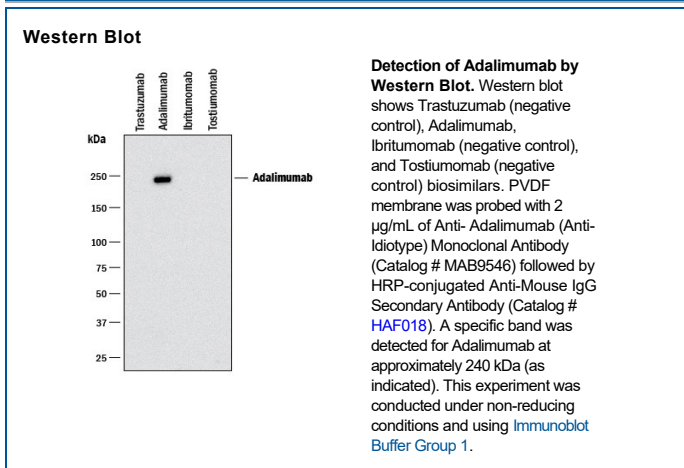
<b>Specificity</b>	Detects Adalimumab in Western blots and direct ELISAs. In direct ELISAs, no cross-reactivity with Cetuximab, Ibritumomab, Rituximab, Trastuzumab, Tositumomab, Brentuximab, Gemtuzumab, Solanezumab, Teprotumumab, and Aducanumab is observed.
<b>Source</b>	Monoclonal Mouse IgG <sub>2B</sub> Clone # 972557
<b>Purification</b>	Protein A or G purified from hybridoma culture supernatant
<b>Immunogen</b>	Full length Adalimumab
<b>Formulation</b>	Lyophilized from a 0.2 µm filtered solution in PBS with Trehalose.

## APPLICATIONS

**Please Note:** Optimal dilutions should be determined by each laboratory for each application. [General Protocols](#) are available in the Technical Information section on our website.

	Recommended Concentration	Sample
<b>Western Blot</b>	2 µg/mL	See Below
<b>ELISA</b>	Detects Adalimumab in direct ELISAs.	

## DATA



## PREPARATION AND STORAGE

<b>Reconstitution</b>	Reconstitute at 0.5 mg/mL in sterile PBS.
<b>Shipping</b>	The product is shipped at ambient temperature. Upon receipt, store it immediately at the temperature recommended below.
<b>Stability &amp; Storage</b>	Use a manual defrost freezer and avoid repeated freeze-thaw cycles. <ul style="list-style-type: none"> <li>• 12 months from date of receipt, -20 to -70 °C as supplied.</li> <li>• 1 month, 2 to 8 °C under sterile conditions after reconstitution.</li> <li>• 6 months, -20 to -70 °C under sterile conditions after reconstitution.</li> </ul>

**BACKGROUND**

The anti-Adalimumab antibody is an anti-Idiotypic antibody raised against and selected for the antigenic determinants of the variable region of Adalimumab. The antibody has been tested against a broad range of other biosimilars to ensure specificity. This highly specialized anti-idiotypic antibody can be used in a variety of pharmacokinetic (PK) assay formats.