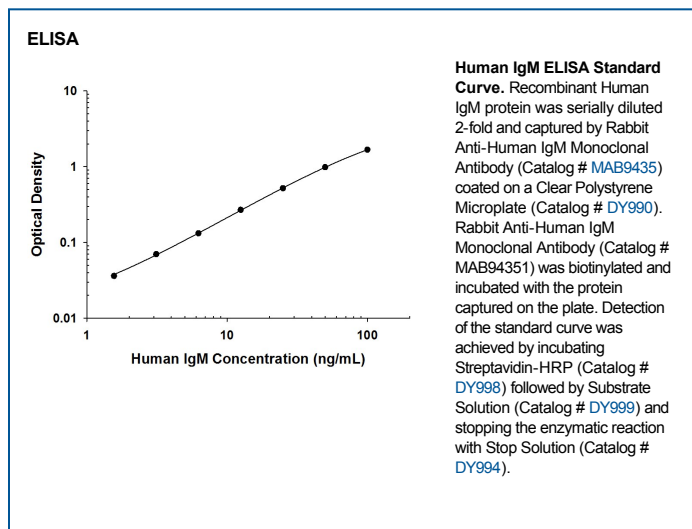
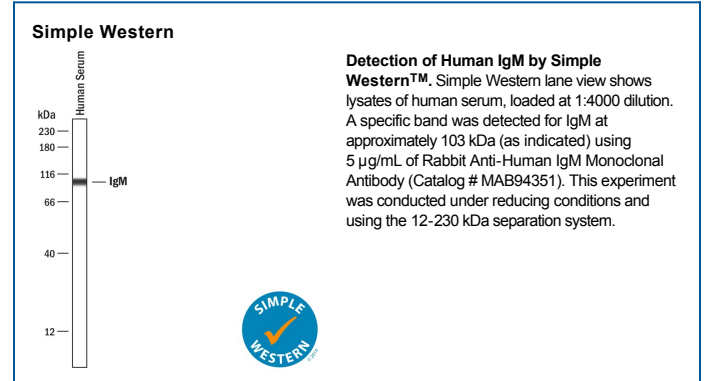
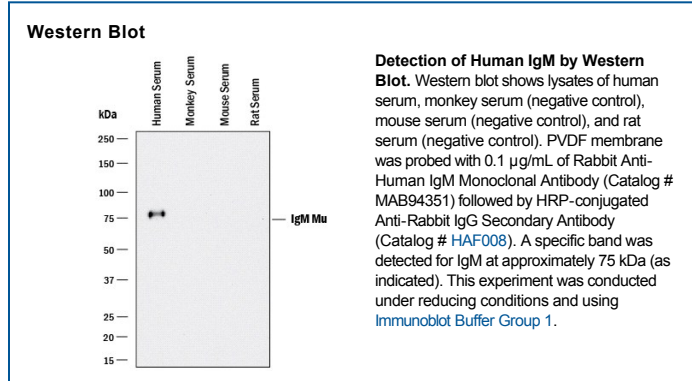


DESCRIPTION	
<b>Species Reactivity</b>	Human
<b>Specificity</b>	Detects human IgM in direct ELISAs and Western blots.
<b>Source</b>	Recombinant Monoclonal Rabbit IgG Clone # 2123C
<b>Purification</b>	Protein A or G purified from cell culture supernatant
<b>Immunogen</b>	Immunoglobulin M (IgM), mu chain from human plasma
<b>Formulation</b>	Lyophilized from a 0.2 µm filtered solution in PBS with Trehalose. See Certificate of Analysis for details. *Small pack size (-SP) is supplied either lyophilized or as a 0.2 µm filtered solution in PBS.

APPLICATIONS		
<b>Please Note:</b> Optimal dilutions should be determined by each laboratory for each application. <i>General Protocols</i> are available in the <i>Technical Information</i> section on our website.		
	<b>Recommended Concentration</b>	<b>Sample</b>
<b>Western Blot</b>	0.1 µg/mL	See Below
<b>Simple Western</b>	5 µg/mL	See Below
<b>ELISA</b>	This antibody functions as an ELISA detection antibody when paired with Rabbit Anti-Human IgM Monoclonal Antibody (Catalog # MAB9435).	
<i>This product is intended for assay development on various assay platforms requiring antibody pairs.</i>		

**DATA**



**PREPARATION AND STORAGE**

<b>Reconstitution</b>	Reconstitute at 0.5 mg/mL in sterile PBS.
<b>Shipping</b>	The product is shipped at ambient temperature. Upon receipt, store it immediately at the temperature recommended below. *Small pack size (-SP) is shipped with polar packs. Upon receipt, store it immediately at -20 to -70 °C
<b>Stability &amp; Storage</b>	<b>Use a manual defrost freezer and avoid repeated freeze-thaw cycles.</b> <ul style="list-style-type: none"><li>● 12 months from date of receipt, -20 to -70 °C as supplied.</li><li>● 1 month, 2 to 8 °C under sterile conditions after reconstitution.</li><li>● 6 months, -20 to -70 °C under sterile conditions after reconstitution.</li></ul>