

DESCRIPTION

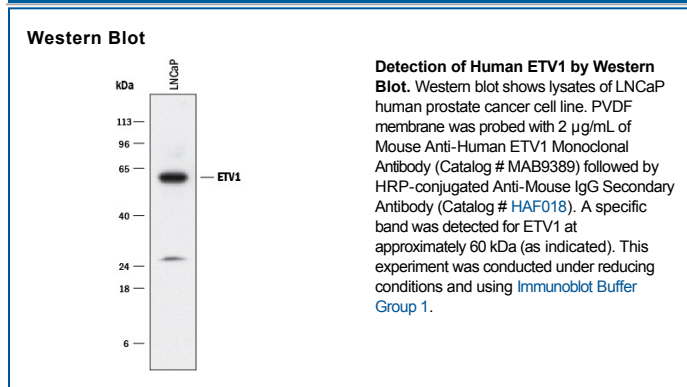
Species Reactivity	Human
Specificity	Detects human ETV1 in direct ELISAs and Western blots.
Source	Monoclonal Mouse IgG ₁ Clone # 815207
Purification	Protein A or G purified from hybridoma culture supernatant
Immunogen	<i>E. coli</i> -derived recombinant human ETV1 Asn120-Leu190 Accession # P50549
Formulation	Lyophilized from a 0.2 µm filtered solution in PBS with Trehalose. See Certificate of Analysis for details. *Small pack size (-SP) is supplied as a 0.2 µm filtered solution in PBS.

APPLICATIONS

Please Note: Optimal dilutions should be determined by each laboratory for each application. *General Protocols* are available in the *Technical Information* section on our website.

	Recommended Concentration	Sample
Western Blot	2 µg/mL	See Below

DATA



PREPARATION AND STORAGE

Reconstitution	Reconstitute at 0.5 mg/mL in sterile PBS.
Shipping	The product is shipped at ambient temperature. Upon receipt, store it immediately at the temperature recommended below. *Small pack size (-SP) is shipped with polar packs. Upon receipt, store it immediately at -20 to -70 °C
Stability & Storage	Use a manual defrost freezer and avoid repeated freeze-thaw cycles. <ul style="list-style-type: none"> ● 12 months from date of receipt, -20 to -70 °C as supplied. ● 1 month, 2 to 8 °C under sterile conditions after reconstitution. ● 6 months, -20 to -70 °C under sterile conditions after reconstitution.

BACKGROUND

ETS translocation variant 1 is a protein that in humans is encoded by the ETV1 gene. ETV-1, ETV-4 and ETV-5 proteins form the PEA3 subfamily of ETS transcription factors. Posttranslational modifications in this subfamily promote cell proliferation, motility and invasion. Disregulation of ETV-1 has been observed in gastrointestinal stromal and protatic tumors, and in triple-negative breast cancer. Human ETV-1 is a 477 aminoacids (aa) protein with at least six known isoforms. Over the immunogen used in this antibody (aa120-190), ETV-1 sequences are 96% identical to mouse and rat ETV-1 sequences.