

DESCRIPTION

Species Reactivity	Human
Specificity	Detects the ectodomain of recombinant human (rh) ADAM15 in direct ELISAs and Western blots. In direct ELISAs, shows 100% cross-reactivity with recombinant mouse (rm) ADAM15 but does not cross-react with rhADAM8, 9, 17, 28, rmADAM9, or 10.
Source	Monoclonal Mouse IgG ₁ Clone # 23G9
Purification	Protein A or G purified from hybridoma culture supernatant
Immunogen	COS-7 African green monkey SV40 transformed kidney fibroblast-like cell line-derived recombinant human ADAM15 Asp207-Thr696 Accession # Q13444
Formulation	Lyophilized from a 0.2 µm filtered solution in PBS with Trehalose. See Certificate of Analysis for details. *Small pack size (-SP) is supplied as a 0.2 µm filtered solution in PBS.

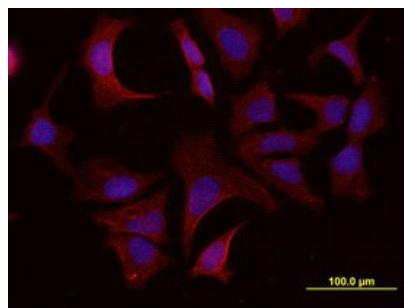
APPLICATIONS

Please Note: Optimal dilutions should be determined by each laboratory for each application. *General Protocols* are available in the *Technical Information* section on our website.

	Recommended Concentration	Sample
Western Blot	1 µg/mL	Recombinant Human ADAM15 Western Blot Standard (Catalog # WBC027) under non-reducing conditions only
Immunocytochemistry	8-25 µg/mL	See Below
Immunohistochemistry	8-25 µg/mL	See Below
Immunoprecipitation	25 µg/mL	Conditioned cell culture medium spiked with Recombinant Human ADAM15, see our available Western blot detection antibodies
Intracellular Staining by Flow Cytometry	2.5 µg/10 ⁶ cells	MCF-7 human breast cancer cell line fixed with paraformaldehyde and permeabilized with saponin
CyTOF-ready		Ready to be labeled using established conjugation methods. No BSA or other carrier proteins that could interfere with conjugation.

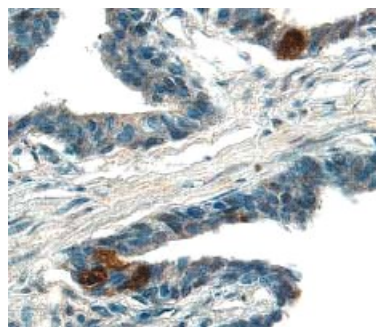
DATA

Immunocytochemistry



ADAM15 in MCF-7 Human Cell Line. ADAM15 was detected in immersion fixed MCF-7 human breast cancer cell line using Human ADAM15 Ectodomain Monoclonal Antibody (Catalog # MAB935) at 10 µg/mL for 3 hours at room temperature. Cells were stained using the NorthernLights™ 557-conjugated Anti-Mouse IgG Secondary Antibody (red; Catalog # NL007) and counterstained with DAPI (blue). View our protocol for [Fluorescent ICC Staining of Cells on Coverslips](#).

Immunohistochemistry



ADAM15 in Human Prostate Cancer Tissue. ADAM15 was detected in immersion fixed paraffin-embedded sections of human prostate cancer tissue using 25 µg/mL Human ADAM15 Ectodomain Monoclonal Antibody (Catalog # MAB935) overnight at 4 °C. Tissue was stained with the Anti-Mouse HRP-DAB Cell & Tissue Staining Kit (brown; Catalog # CTS002) and counterstained with hematoxylin (blue). View our protocol for [Chromogenic IHC Staining of Paraffin-embedded Tissue Sections](#).

PREPARATION AND STORAGE

Reconstitution	Reconstitute at 0.5 mg/mL in sterile PBS.
Shipping	The product is shipped at ambient temperature. Upon receipt, store it immediately at the temperature recommended below. *Small pack size (-SP) is shipped with polar packs. Upon receipt, store it immediately at -20 to -70 °C
Stability & Storage	Use a manual defrost freezer and avoid repeated freeze-thaw cycles. <ul style="list-style-type: none"> • 12 months from date of receipt, -20 to -70 °C as supplied. • 1 month, 2 to 8 °C under sterile conditions after reconstitution. • 6 months, -20 to -70 °C under sterile conditions after reconstitution.

BACKGROUND

ADAM15 belongs to a family of transmembrane proteins that contain disintegrin and metalloprotease domains. Members of this family have been implicated in cell adhesion via integrin binding and shedding of cell surface molecules.