

DESCRIPTION

| | |
|---------------------------|---|
| Species Reactivity | Human |
| Specificity | Detects human MCAM in direct ELISAs and Western blots. In direct ELISAs and Western blots, no cross-reactivity with recombinant human (rh) ALCAM, rhBCAM, rhEpCAM, rhNCAM-L1, recombinant mouse (rm) OCAM, or rmMAdCAM-1 is observed. |
| Source | Monoclonal Mouse IgG ₁ Clone # 128018 |
| Purification | Protein A or G purified from hybridoma culture supernatant |
| Immunogen | Mouse myeloma cell line NS0-derived recombinant human MCAM Val24-Gly559 Accession # AAA20824 |
| Formulation | Lyophilized from a 0.2 µm filtered solution in PBS with Trehalose. See Certificate of Analysis for details. *Small pack size (-SP) is supplied either lyophilized or as a 0.2 µm filtered solution in PBS. |

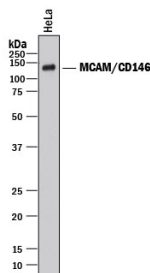
APPLICATIONS

Please Note: Optimal dilutions should be determined by each laboratory for each application. [General Protocols](#) are available in the Technical Information section on our website.

| | Recommended Concentration | Sample |
|----------------------------|--|---------------|
| Western Blot | 1 µg/mL | See Below |
| Flow Cytometry | 0.25 µg/10 ⁶ cells | See Below |
| Immunocytochemistry | 8-25 µg/mL | See Below |
| CyTOF-ready | Ready to be labeled using established conjugation methods. No BSA or other carrier proteins that could interfere with conjugation. | |

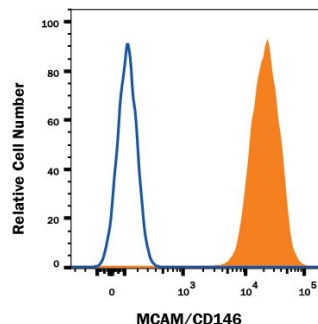
DATA

Western Blot



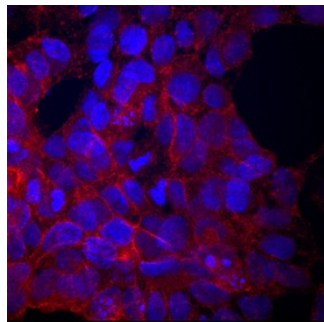
Detection of Human MCAM/CD146 by Western Blot. Western blot shows lysate of HeLa human cervical epithelial carcinoma cell line. PVDF membrane was probed with 1 µg/mL of Mouse Anti-Human MCAM/CD146 Monoclonal Antibody (Catalog # MAB932) followed by HRP-conjugated Anti-Mouse IgG Secondary Antibody (Catalog # HAF018). A specific band was detected for MCAM/CD146 at approximately 140 kDa (as indicated). This experiment was conducted under reducing conditions and using Immunoblot Buffer Group 1.

Flow Cytometry



Detection of MCAM/CD146 in HeLa Human Cell Line by Flow Cytometry. HeLa human cervical epithelial carcinoma cell line was stained with Mouse Anti-Human MCAM/CD146 Monoclonal Antibody (Catalog # MAB932, filled histogram) or isotype control antibody (Catalog # MAB002, open histogram) followed by anti-Mouse PE-conjugated Secondary Antibody (Catalog # F0102B). View our protocol for [Staining Membrane-associated Proteins](#).

Immunocytochemistry



MCAM/CD146 in BG01V Human Embryonic Stem Cells. MCAM/CD146 was detected in immersion fixed BG01V human embryonic stem cells using Mouse Anti-Human MCAM/CD146 Monoclonal Antibody (Catalog # MAB932) at 10 µg/mL for 3 hours at room temperature. Cells were stained using the NorthernLights™ 557-conjugated Anti-Mouse IgG Secondary Antibody (red; Catalog # NL007) and counterstained with DAPI (blue). Specific staining was localized to cell membranes and cytoplasm. View our protocol for [Fluorescent ICC Staining of Stem Cells on Coverslips](#).

PREPARATION AND STORAGE

Reconstitution Reconstitute at 0.5 mg/mL in sterile PBS.

Shipping The product is shipped at ambient temperature. Upon receipt, store it immediately at the temperature recommended below.
*Small pack size (-SP) is shipped with polar packs. Upon receipt, store it immediately at -20 to -70 °C

Stability & Storage Use a manual defrost freezer and avoid repeated freeze-thaw cycles.

- 12 months from date of receipt, -20 to -70 °C as supplied.
- 1 month, 2 to 8 °C under sterile conditions after reconstitution.
- 6 months, -20 to -70 °C under sterile conditions after reconstitution.

BACKGROUND

MCAM, also known as MUC18, is a putative adhesion molecule that belongs to the immunoglobulin superfamily. It is associated with tumor progression and metastasis of various carcinomas and may be involved in embryonic neural development.