

DESCRIPTION

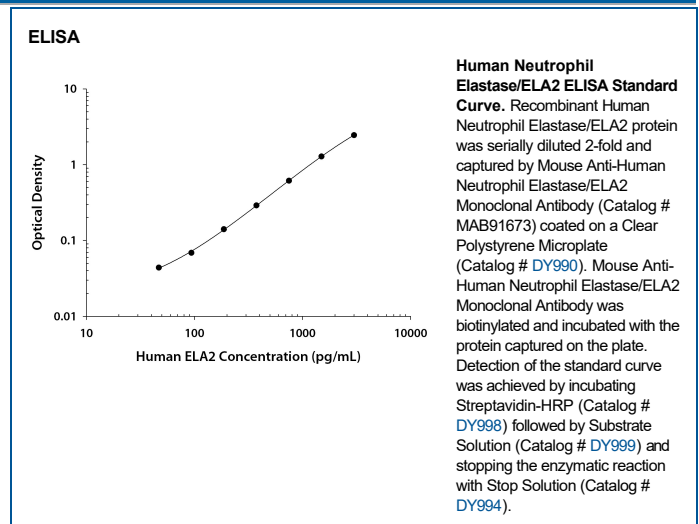
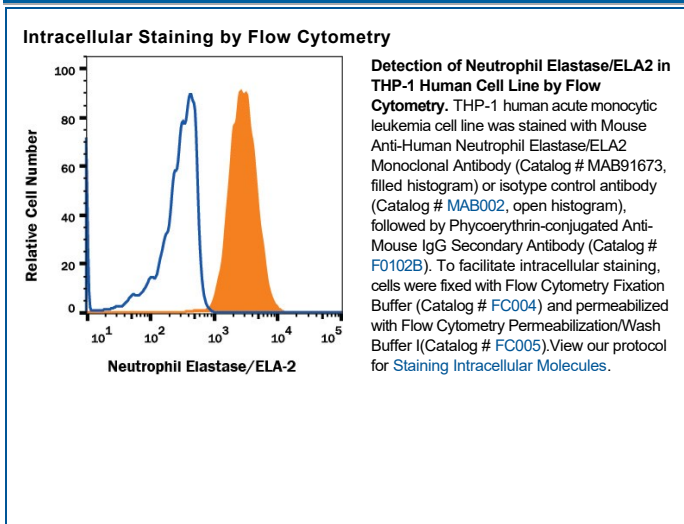
Species Reactivity	Human
Specificity	Detects human Elastase/ELA-2 in direct ELISAs.
Source	Monoclonal Mouse IgG ₁ Clone # 950312
Purification	Protein A or G purified from hybridoma culture supernatant
Immunogen	Chinese hamster ovary cell line CHO-derived recombinant human Elastase/ELA-2 Met1-Asn252 Accession # P08246
Formulation	Lyophilized from a 0.2 µm filtered solution in PBS with Trehalose. See Certificate of Analysis for details. *Small pack size (-SP) is supplied either lyophilized or as a 0.2 µm filtered solution in PBS.

APPLICATIONS

Please Note: Optimal dilutions should be determined by each laboratory for each application. General Protocols are available in the Technical Information section on our website.

	Recommended Concentration	Sample
Intracellular Staining by Flow Cytometry	0.25 µg/10 ⁶ cells	See Below
CytoF-ready	Ready to be labeled using established conjugation methods. No BSA or other carrier proteins that could interfere with conjugation.	
ELISA	This antibody functions as an ELISA capture antibody when paired with Mouse Anti-Human Neutrophil Elastase/ELA2 Monoclonal Antibody (Catalog # MAB91672). <i>This product is intended for assay development on various assay platforms requiring antibody pairs. We recommend the Human Neutrophil Elastase/ELA2 DuoSet ELISA Kit (Catalog # DY9167-05) for convenient development of a sandwich ELISA.</i>	

DATA



PREPARATION AND STORAGE

Reconstitution	Reconstitute at 0.5 mg/mL in sterile PBS.
Shipping	The product is shipped at ambient temperature. Upon receipt, store it immediately at the temperature recommended below. *Small pack size (-SP) is shipped with polar packs. Upon receipt, store it immediately at -20 to -70 °C
Stability & Storage	Use a manual defrost freezer and avoid repeated freeze-thaw cycles. <ul style="list-style-type: none"> • 12 months from date of receipt, -20 to -70 °C as supplied. • 1 month, 2 to 8 °C under sterile conditions after reconstitution. • 6 months, -20 to -70 °C under sterile conditions after reconstitution.

BACKGROUND

Neutrophil Elastase (ELA2, ELANE), also known as HNE, is a chymotrypsin family serine protease that plays a key role in pathogen clearance (1-3). It is expressed by promyelocytes and stored in the intracellular azurophilic granules of polymorphonuclear leukocytes (PMN) (4). These granules fuse with phagosomes, enabling Neutrophil Elastase to participate in the digestion and killing of endocytosed microbes. The enzyme is released by activated neutrophils at sites of inflammation, and it can remain associated with the cell surface or function as a component of neutrophil extracellular nets (NETs) which trap and kill microbial pathogens (5, 6). It also can degrade multiple extracellular matrix proteins including Elastin and Fibronectin (5). In the lung, this activity contributes to pathology in emphysema, cystic fibrosis, and adult respiratory distress syndrome (ARDS) (1). Neutrophil Elastase can be inhibited by Serpin A1/alpha 1-Antitrypsin, SLPI, Serpin B1, and Trappin-2/Elafin (7-11). Its activity in the lung is increased by exposure to tobacco smoke which inactivates Serpin A1 through methionine oxidation (12). Mature human Neutrophil Elastase shares 73% amino acid sequence identity with mouse and rat Neutrophil Elastase (13, 14). Multiple mutations in the human ELANE gene are causative of severe congenital and cyclic neutropenias (15).

References:

1. Korkmaz, B. *et al.* (2010) *Pharmacol. Rev.* **62**:726.
2. Stein, R.L. *et al.* (1987) *Biochemistry* **26**:1301.
3. Bachovchin, W.W. (1986) *Biochemistry* **25**:7751.
4. Garwicz, D. *et al.* (2005) *Haematologica* **90**:38.
5. Owen, C.A. *et al.* (1995) *J. Cell Biol.* **131**:775.
6. Stephan, A. and M. Fabri (2015) *Exp. Dermatol.* **24**:161.
7. Carrell, R.W. *et al.* (1982) *Nature* **298**:329.
8. Rice, W.G. and S.J. Weiss (1990) *Science* **249**:178.
9. Thompson, R.C. *et al.* (1986) *Proc. Natl. Acad. Sci. USA* **83**:6692.
10. Cooley, J. *et al.* (2001) *Biochemistry* **40**:15762.
11. Wiedow, O. *et al.* (1990) *J. Biol. Chem.* **265**:14791.
12. Taggart, C. *et al.* (2000) *J. Biol. Chem.* **275**:27258.
13. Sinha, S. *et al.* (1987) *Proc. Natl. Acad. Sci. USA* **84**:2228.
14. Okano, K. *et al.* (1987) *J. Biochem.* **102**:13.
15. Makaryan, V. *et al.* (2015) *Curr. Opin. Hematol.* **22**:3.