

DESCRIPTION

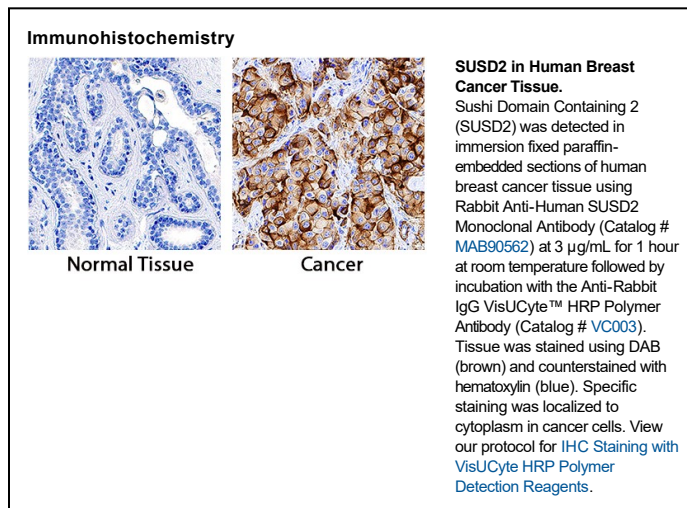
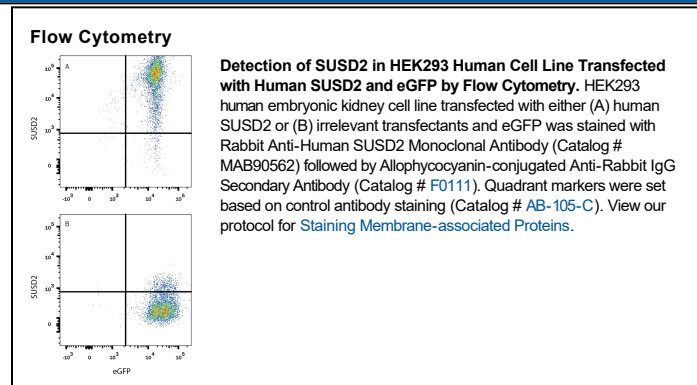
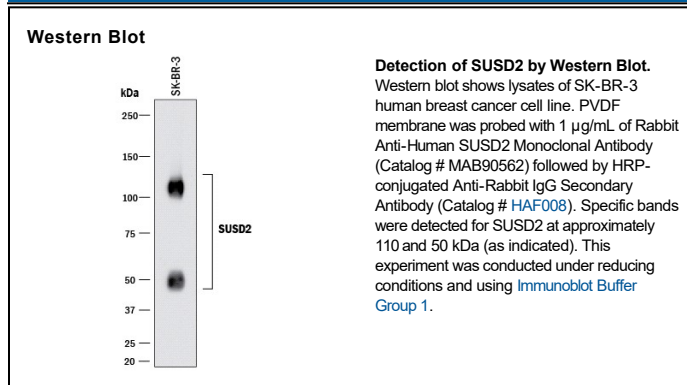
Species Reactivity	Human
Specificity	Detects human SUSD2 in direct ELISAs and Western blots.
Source	Recombinant Monoclonal Rabbit IgG Clone # 1279A
Purification	Protein A or G purified from cell culture supernatant
Immunogen	HEK293 human embryonic kidney cell line-derived human SUSD2 Met1-Ala785 Accession # Q9UGT4
Formulation	Supplied as a solution in PBS containing BSA, Glycerol and Sodium Azide. See Certificate of Analysis for details. *Small pack size (-SP) is supplied either lyophilized or as a 0.2 µm filtered solution in PBS.

APPLICATIONS

Please Note: Optimal dilutions should be determined by each laboratory for each application. *General Protocols* are available in the *Technical Information* section on our website.

	Recommended Concentration	Sample
Western Blot	1 µg/mL	See Below
Flow Cytometry	0.25 µg/10 ⁶ cells	See Below
Immunohistochemistry	3-25 µg/mL	See Below

DATA



PREPARATION AND STORAGE

Shipping	The product is shipped with polar packs. Upon receipt, store it immediately at the temperature recommended below. *Small pack size (-SP) is shipped with polar packs. Upon receipt, store it immediately at -20 to -70 °C
Stability & Storage	Use a manual defrost freezer and avoid repeated freeze-thaw cycles. <ul style="list-style-type: none"> ● 12 months from date of receipt, -20 to -70 °C, as supplied. ● 1 month, 2 to 8 °C under sterile conditions after opening. ● 6 months, -20 to -70 °C under sterile conditions after opening.

BACKGROUND

Sushi domain containing 2, or SUSD2, is a type I transmembrane protein of 822 amino acids containing functional domains inherent to adhesion molecules. SUSD2 has been described as a novel marker of human endometrial mesenchymal stem-like cells and it has been used for their prospective isolation. As a transmembrane receptor, SUSD2 has been proposed to interact with Galectin-1 and to be the receptor for C10ORF99, a novel potential cytokine suggested to inhibit colon cancer cell growth through inducing G1 arrest. There is evidence that SUSD2 may play a role in breast tumorigenesis.

PRODUCT SPECIFIC NOTICES

Contains <0.1% Sodium Azide, which is not hazardous at this concentration according to GHS classifications. Refer to SDS for additional information and handling instructions.