

DESCRIPTION

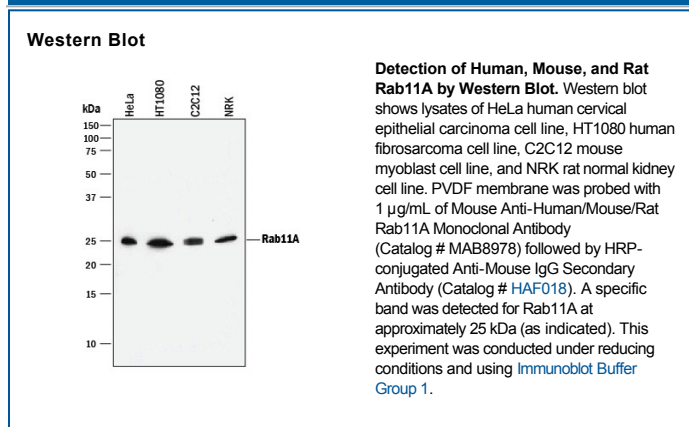
Species Reactivity	Human/Mouse/Rat
Specificity	Detects human Rab-11A in direct ELISAs and Western blots.
Source	Monoclonal Mouse IgG _{2B} Clone # 918009
Purification	Protein A or G purified from hybridoma culture supernatant
Immunogen	<i>E. coli</i> -derived recombinant human Rab-11A Met1-Glu162 Accession # P62491
Formulation	Lyophilized from a 0.2 µm filtered solution in PBS with Trehalose. See Certificate of Analysis for details. *Small pack size (-SP) is supplied as a 0.2 µm filtered solution in PBS.

APPLICATIONS

Please Note: Optimal dilutions should be determined by each laboratory for each application. *General Protocols* are available in the *Technical Information* section on our website.

	Recommended Concentration	Sample
Western Blot	1 µg/mL	See Below

DATA



PREPARATION AND STORAGE

Reconstitution	Reconstitute at 0.5 mg/mL in sterile PBS.
Shipping	The product is shipped at ambient temperature. Upon receipt, store it immediately at the temperature recommended below. *Small pack size (-SP) is shipped with polar packs. Upon receipt, store it immediately at -20 to -70 °C
Stability & Storage	Use a manual defrost freezer and avoid repeated freeze-thaw cycles. <ul style="list-style-type: none"> • 12 months from date of receipt, -20 to -70 °C as supplied. • 1 month, 2 to 8 °C under sterile conditions after reconstitution. • 6 months, -20 to -70 °C under sterile conditions after reconstitution.

BACKGROUND

Ras-related protein Rab11A is a 25 kDa member of the Rab family of small GTPases. With more than 40 family members, Rab proteins are regulators of vesicular transport, and their number reflects the complexity of vesicle trafficking. Rab family members cycle between an inactive GDP-bound form and an active GTP-bound form that recruits to membranes various downstream effectors directly responsible for vesicle formation, migration and fusion. Rab11A is ubiquitously expressed, with Northern blot analysis detecting highest levels in heart, and lowest levels in liver. Human Rab11A is 216 amino acids (aa) in length, with residues 214-216 removed in its mature form. Over aa 1-162, human Rab11A shares 100% identity with mouse and rat Rab11A.