

DESCRIPTION

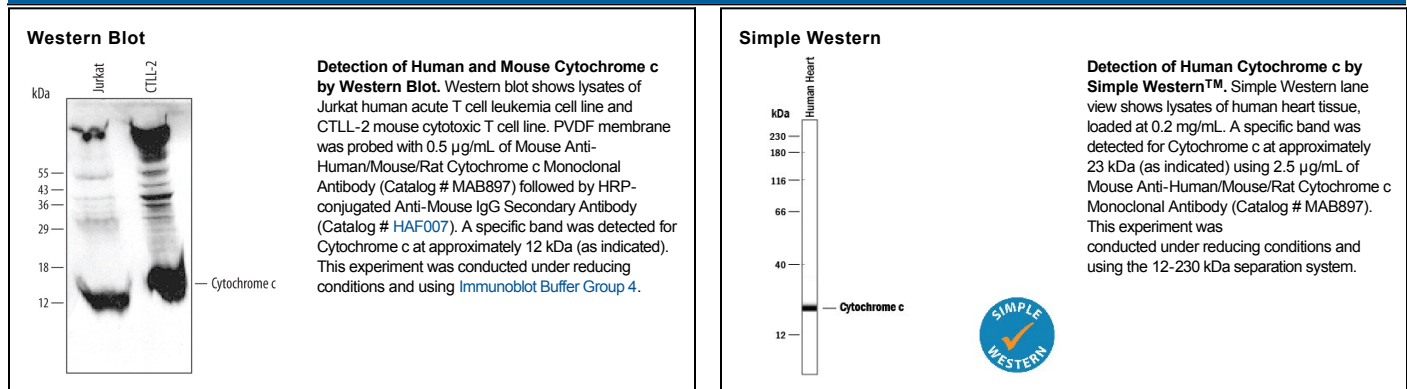
Species Reactivity	Human/Mouse/Rat
Specificity	Reacts with denatured human, mouse and rat Cytochrome c, but not native Cytochrome c in Western blots.
Source	Monoclonal Mouse IgG _{2B} Clone # 7H8.2C12
Purification	Protein A or G purified from ascites
Immunogen	Pigeon Cytochrome c
Formulation	Lyophilized from a 0.2 µm filtered solution in PBS with Trehalose. See Certificate of Analysis for details. *Small pack size (-SP) is supplied as a 0.2 µm filtered solution in PBS.

APPLICATIONS

Please Note: Optimal dilutions should be determined by each laboratory for each application. General Protocols are available in the Technical Information section on our website.

	Recommended Concentration	Sample
Western Blot	0.5 µg/mL	See Below
Simple Western	2.5 µg/mL	See Below

DATA



PREPARATION AND STORAGE

Reconstitution	Reconstitute at 0.5 mg/mL in sterile PBS.
Shipping	The product is shipped at ambient temperature. Upon receipt, store it immediately at the temperature recommended below. *Small pack size (-SP) is shipped with polar packs. Upon receipt, store it immediately at -20 to -70 °C
Stability & Storage	<p>Use a manual defrost freezer and avoid repeated freeze-thaw cycles.</p> <ul style="list-style-type: none"> ● 12 months from date of receipt, -20 to -70 °C as supplied. ● 1 month, 2 to 8 °C under sterile conditions after reconstitution. ● 6 months, -20 to -70 °C under sterile conditions after reconstitution.

BACKGROUND

Cytochrome c is a mitochondrial electron transport protein that functions in oxidative phosphorylation. Release of Cytochrome c into the cytosol is an early step in apoptotic cell death.