

## DESCRIPTION

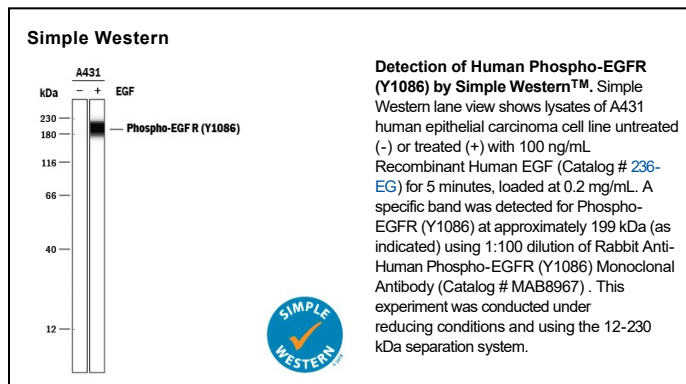
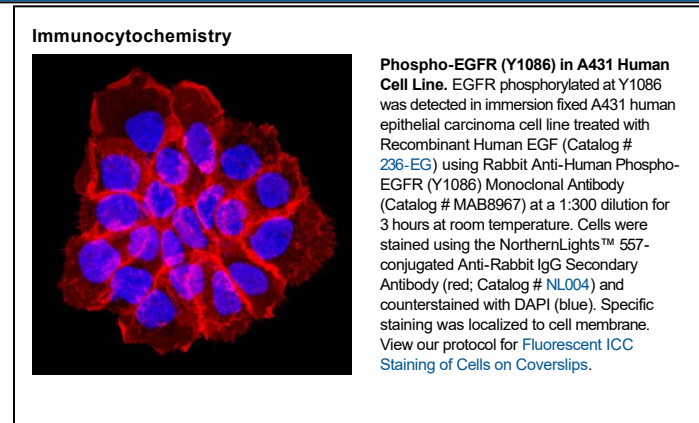
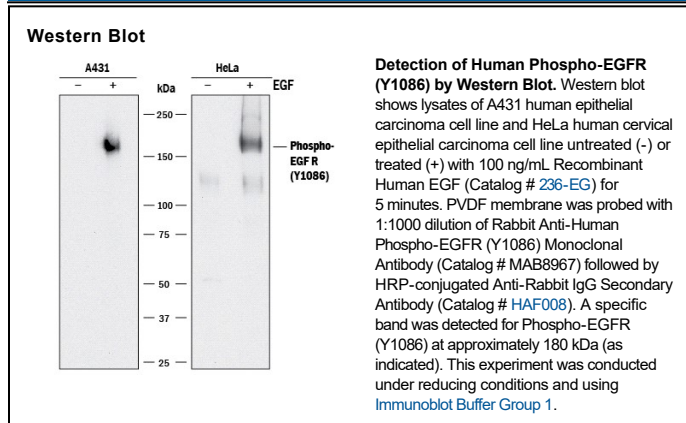
<b>Species Reactivity</b>	Human
<b>Specificity</b>	Detects human EGFR when phosphorylated at Y1086 in Western blots.
<b>Source</b>	Recombinant Monoclonal Rabbit IgG Clone # 1240C
<b>Purification</b>	Protein A or G purified from cell culture supernatant
<b>Immunogen</b>	Phosphopeptide containing the human EGFR Y1086 site Accession # P00533
<b>Formulation</b>	Supplied as a solution in PBS containing BSA, Glycerol and Sodium Azide. See Certificate of Analysis for details. *Small pack size (-SP) is supplied either lyophilized or as a 0.2 µm filtered solution in PBS.

## APPLICATIONS

**Please Note:** Optimal dilutions should be determined by each laboratory for each application. [General Protocols](#) are available in the [Technical Information](#) section on our website.

	Recommended Concentration	Sample
<b>Western Blot</b>	1:1000 dilution	See Below
<b>Immunocytochemistry</b>	1:300-1:500 dilution	See Below
<b>Simple Western</b>	1:100 dilution	See Below

## DATA



## PREPARATION AND STORAGE

<b>Shipping</b>	The product is shipped with polar packs. Upon receipt, store it immediately at the temperature recommended below. *Small pack size (-SP) is shipped with polar packs. Upon receipt, store it immediately at -20 to -70 °C
<b>Stability &amp; Storage</b>	Use a manual defrost freezer and avoid repeated freeze-thaw cycles. <ul style="list-style-type: none"> <li>● 12 months from date of receipt, -20 to -70 °C, as supplied.</li> <li>● 1 month, 2 to 8 °C under sterile conditions after opening.</li> <li>● 6 months, -20 to -70 °C under sterile conditions after opening.</li> </ul>

## BACKGROUND

Epidermal growth factor receptor (EGFR, also known as ErbB1 and HER1) is the founding member of the ErbB family of receptor tyrosine kinases. Ligand binding induces receptor dimerization and autophosphorylation on multiple tyrosine residues. Phosphorylation of Y1086 creates a binding site for the adaptor protein GRB2, leading to attenuation of receptor signaling.

## PRODUCT SPECIFIC NOTICES

\* Contains <0.1% Sodium Azide, which is not hazardous at this concentration according to GHS classifications. Refer to SDS for additional information and handling instructions.