

DESCRIPTION

Species Reactivity	Human
Specificity	Detects human c-Jun when phosphorylated at S63 in Western blots.
Source	Recombinant Monoclonal Rabbit IgG Clone # 1018Y
Purification	Protein A or G purified from cell culture supernatant
Immunogen	Phosphopeptide containing the human c-Jun S63 site Accession # P05412
Formulation	Supplied as a solution in PBS containing BSA, Glycerol and Sodium Azide. See Certificate of Analysis for details. *Small pack size (-SP) is supplied either lyophilized or as a 0.2 µm filtered solution in PBS.

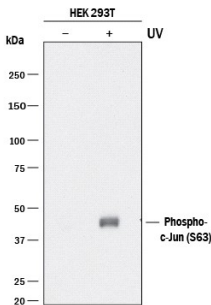
APPLICATIONS

Please Note: Optimal dilutions should be determined by each laboratory for each application. [General Protocols](#) are available in the [Technical Information](#) section on our website.

	Recommended Concentration	Sample
Western Blot	1:1000 dilution	See Below
Immunocytochemistry	1:250-1:500 dilution	See Below
Simple Western	1:100 dilution	See Below

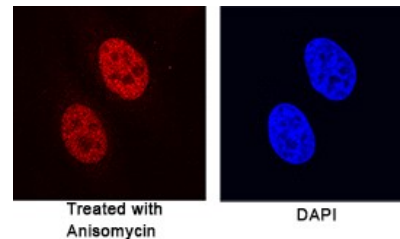
DATA

Western Blot



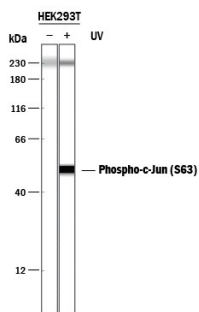
Detection of Human Phospho-c-Jun (S63) by Western Blot. Western blot shows lysates of HEK293T human embryonic kidney cell line untreated (-) or treated (+) with 20 mJ/cm² ultraviolet light (UV) with a 30 minute recovery. PVDF membrane was probed with 1:1000 dilution of Rabbit Anti-Human Phospho-c-Jun (S63) Monoclonal Antibody (Catalog # MAB8930) followed by HRP-conjugated Anti-Rabbit IgG Secondary Antibody (Catalog # HAF008). A specific band was detected for Phospho-c-Jun (S63) at approximately 45 kDa (as indicated). This experiment was conducted under reducing conditions and using Immunoblot Buffer Group 1.

Immunocytochemistry



c-Jun in HeLa Human Cell Line. c-Jun phosphorylated at S63 was detected in immersion fixed HeLa human cervical epithelial carcinoma cell line treated with Anisomycin using Rabbit Anti-Human Phospho-c-Jun (S63) Monoclonal Antibody (Catalog # MAB8930) at 1:500 dilution for 3 hours at room temperature. Cells were stained using the NorthernLights™ 557-conjugated Anti-Mouse IgG Secondary Antibody (red; Catalog # NL007) and counterstained with DAPI (blue). Specific staining was localized to nuclei. View our protocol for [Fluorescent ICC Staining of Cells on Coverslips](#).

Simple Western



Detection of Human Phospho-c-Jun (S63) by Simple Western™. Simple Western lane view shows lysates of HEK293T human embryonic kidney cell line untreated (-) or treated (+) with 20 mJ/cm² ultraviolet light (UV) with a 30 minute recovery, loaded at 0.2 mg/mL. A specific band was detected for Phospho-c-Jun (S63) at approximately 49 kDa (as indicated) using 1:100 dilution of Rabbit Anti-Human Phospho-c-Jun (S63) Monoclonal Antibody (Catalog # MAB8930). This experiment was conducted under reducing conditions and using the 12-230 kDa separation system. Non-specific interaction with the 230 kDa Simple Western standard may be seen with this antibody.

PREPARATION AND STORAGE

Shipping	The product is shipped with polar packs. Upon receipt, store it immediately at the temperature recommended below. *Small pack size (-SP) is shipped with polar packs. Upon receipt, store it immediately at -20 to -70 °C
Stability & Storage	<p>Use a manual defrost freezer and avoid repeated freeze-thaw cycles.</p> <ul style="list-style-type: none"> ● 12 months from date of receipt, -20 to -70 °C, as supplied. ● 1 month, 2 to 8 °C under sterile conditions after opening. ● 6 months, -20 to -70 °C under sterile conditions after opening.

BACKGROUND

c-Jun is one of three Jun family proteins making up the Activator Protein-1 (AP-1) transcription factor group. c-Jun acts as a positive regulator of cell proliferation and can induce oncogenic transformation.

PRODUCT SPECIFIC NOTICES

* Contains <0.1% Sodium Azide, which is not hazardous at this concentration according to GHS classifications. Refer to SDS for additional information and handling instructions.