

DESCRIPTION

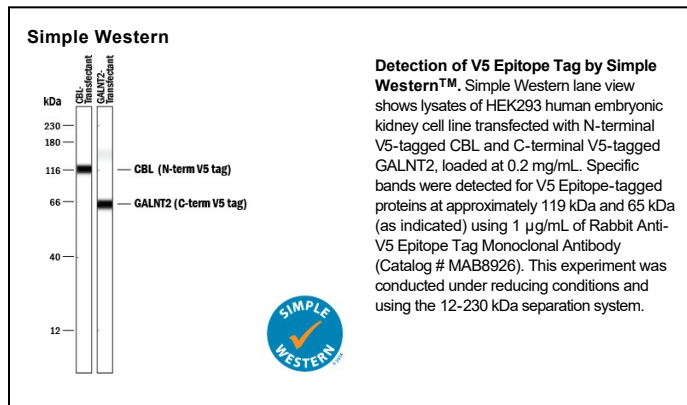
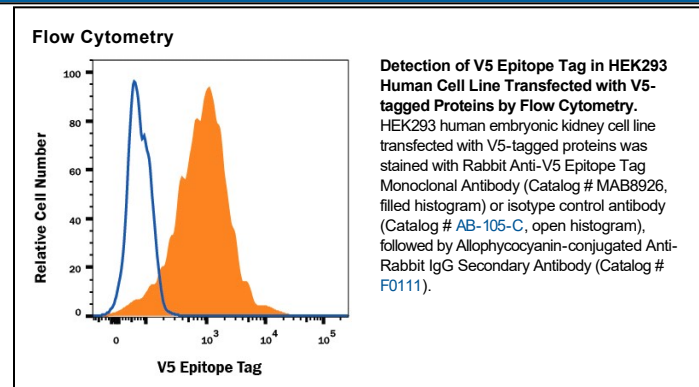
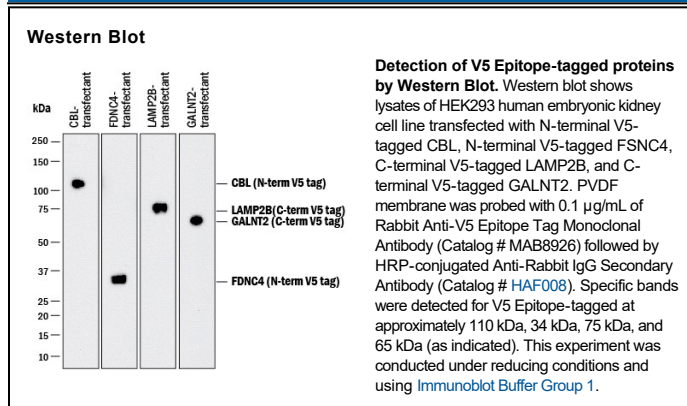
| | |
|---------------------|---|
| Specificity | Detects N-terminal and C-terminal V5 epitope-tagged proteins in Western blots. |
| Source | Recombinant Monoclonal Rabbit IgG Clone # 1036H |
| Purification | Protein A or G purified from cell culture supernatant |
| Immunogen | V5 epitope tag peptide Accession # Y138513 |
| Formulation | Lyophilized from a 0.2 µm filtered solution in PBS with Trehalose. See Certificate of Analysis for details. *Small pack size (-SP) is supplied either lyophilized or as a 0.2 µm filtered solution in PBS. |

APPLICATIONS

Please Note: Optimal dilutions should be determined by each laboratory for each application. *General Protocols* are available in the *Technical Information* section on our website.

| | Recommended Concentration | Sample |
|----------------------------|----------------------------------|---|
| Western Blot | 0.1 µg/mL | See Below |
| Flow Cytometry | 0.25 µg/10 ⁶ cells | See Below |
| Immunoprecipitation | 1-4 µg/100 µg cell lysate | HEK293 human embryonic kidney cell line transfected with N-terminal V5-tagged FDNC4 and C-terminal V5-tagged EAA1, see our available Western blot detection antibodies. |
| Simple Western | 1 µg/mL | See Below |

DATA



PREPARATION AND STORAGE

| | |
|--------------------------------|--|
| Reconstitution | Reconstitute at 0.5 mg/mL in sterile PBS |
| Shipping | The product is shipped at ambient temperature. Upon receipt, store it immediately at the temperature recommended below. *Small pack size (-SP) is shipped with polar packs. Upon receipt, store it immediately at -20 to -70 °C |
| Stability & Storage | Use a manual defrost freezer and avoid repeated freeze-thaw cycles. <ul style="list-style-type: none"> ● 12 months from date of receipt, -20 to -70 °C as supplied. ● 1 month, 2 to 8 °C under sterile conditions after reconstitution. ● 6 months, -20 to -70 °C under sterile conditions after reconstitution. |