

**DESCRIPTION**

<b>Species Reactivity</b>	Human
<b>Specificity</b>	Detects human CIN85/SH3KBP1 in direct ELISAs.
<b>Source</b>	Monoclonal Mouse IgG <sub>1</sub> Clone # 931346
<b>Purification</b>	Protein A or G purified from hybridoma culture supernatant
<b>Immunogen</b>	<i>E. coli</i> -derived recombinant human CIN85/SH3KBP1 Pro366-Lys665 Accession # Q96B97
<b>Formulation</b>	Lyophilized from a 0.2 µm filtered solution in PBS with Trehalose. See Certificate of Analysis for details. *Small pack size (-SP) is supplied either lyophilized or as a 0.2 µm filtered solution in PBS.

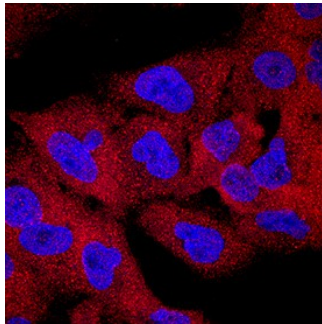
**APPLICATIONS**

**Please Note:** Optimal dilutions should be determined by each laboratory for each application. *General Protocols* are available in the *Technical Information* section on our website.

	<b>Recommended Concentration</b>	<b>Sample</b>
<b>Immunocytochemistry</b>	8-25 µg/mL	See Below

**DATA**

**Immunocytochemistry**



**CIN85/SH3KBP1 in A549 Human Cell Line.** CIN85/SH3KBP1 was detected in immersion fixed A549 human lung carcinoma cell line using Mouse Anti-Human CIN85/SH3KBP1 Monoclonal Antibody (Catalog # MAB88771) at 10 µg/mL for 3 hours at room temperature. Cells were stained using the NorthernLights™ 557-conjugated Anti-Mouse IgG Secondary Antibody (red; Catalog # NL007) and counterstained with DAPI (blue). Specific staining was localized to cytoplasm. View our protocol for [Fluorescent ICC Staining of Cells on Coverslips](#).

**PREPARATION AND STORAGE**

<b>Reconstitution</b>	Reconstitute at 0.5 mg/mL in sterile PBS.
<b>Shipping</b>	The product is shipped at ambient temperature. Upon receipt, store it immediately at the temperature recommended below. *Small pack size (-SP) is shipped with polar packs. Upon receipt, store it immediately at -20 to -70 °C
<b>Stability &amp; Storage</b>	<b>Use a manual defrost freezer and avoid repeated freeze-thaw cycles.</b> <ul style="list-style-type: none"> <li>● 12 months from date of receipt, -20 to -70 °C as supplied.</li> <li>● 1 month, 2 to 8 °C under sterile conditions after reconstitution.</li> <li>● 6 months, -20 to -70 °C under sterile conditions after reconstitution.</li> </ul>

**BACKGROUND**

Independently identified by several groups, SH3-domain kinase-binding protein 1 (SH3KBP1) is also known as CBL-interacting protein of 85 kDa (CIN85), CD2-binding protein 3 (CD2BP3) and human src family kinase-binding protein 1 (HSB1). SH3KBP1 is a widely expressed adaptor protein involved in regulating diverse signal transduction pathways, including endocytosis, lysosomal degradation, cell adhesion, stress response, cell morphology and cytoskeletal organization. The protein contains three N-terminal SH3 domains for complex assembly and a C-terminal coiled coil domain for oligomerization, separated by a proline-rich central region. Smaller known isoforms of SH3KBP1 lack one or more of the SH3 domains. Over amino acids (aa) 366-665, human SH3KBP1 shares 92% and 90% aa identity with mouse and rat SH3KBP1, respectively.