

DESCRIPTION

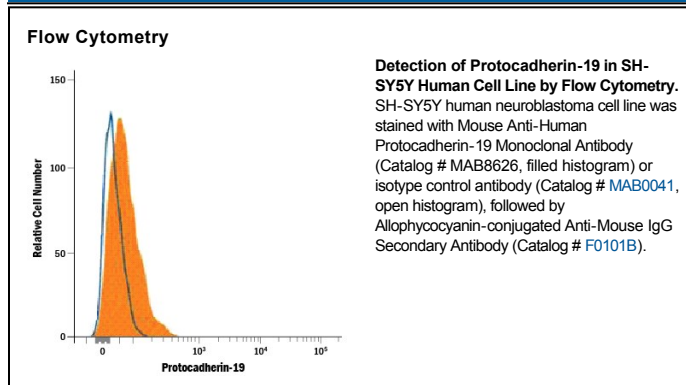
Species Reactivity	Human
Specificity	Detects human Protocadherin-19 in direct ELISA and flow cytometry.
Source	Monoclonal Mouse IgG _{2B} Clone # 921614
Purification	Protein A or G purified from hybridoma culture supernatant
Immunogen	HEK293 human embryonic kidney cell line transfected with human Protocadherin-19 Met1-Ser678 Accession # Q8TAB3
Formulation	Lyophilized from a 0.2 µm filtered solution in PBS with Trehalose. See Certificate of Analysis for details. *Small pack size (-SP) is supplied as a 0.2 µm filtered solution in PBS.

APPLICATIONS

Please Note: Optimal dilutions should be determined by each laboratory for each application. *General Protocols* are available in the *Technical Information* section on our website.

	Recommended Concentration	Sample
Flow Cytometry	0.25 µg/10 ⁶ cells	See Below
CyTOF-ready	Ready to be labeled using established conjugation methods. No BSA or other carrier proteins that could interfere with conjugation.	

DATA



PREPARATION AND STORAGE

Reconstitution	Reconstitute at 0.5 mg/mL in sterile PBS.
Shipping	The product is shipped at ambient temperature. Upon receipt, store it immediately at the temperature recommended below. *Small pack size (-SP) is shipped with polar packs. Upon receipt, store it immediately at -20 to -70 °C
Stability & Storage	Use a manual defrost freezer and avoid repeated freeze-thaw cycles. <ul style="list-style-type: none"> ● 12 months from date of receipt, -20 to -70 °C as supplied. ● 1 month, 2 to 8 °C under sterile conditions after reconstitution. ● 6 months, -20 to -70 °C under sterile conditions after reconstitution.

BACKGROUND

Protocadherin 19 (PCDH19) is a d2-group member of the of the protocadherin subfamily, cadherin family of molecules. PCDH19 is thought to be a calcium-dependent protein primarily expressed in the brain. The protein is also known as EFMR (Epilepsy Female-restricted with Mental Retardation).