

DESCRIPTION

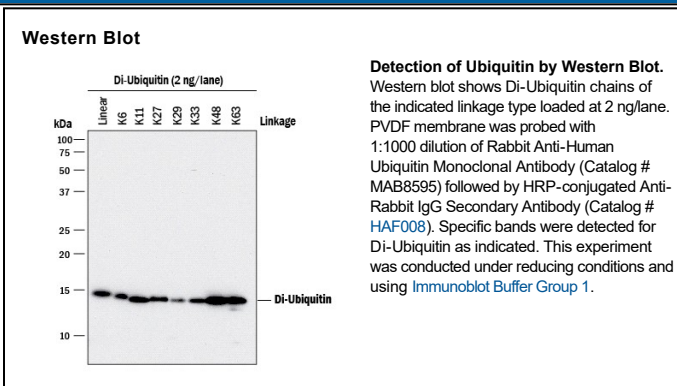
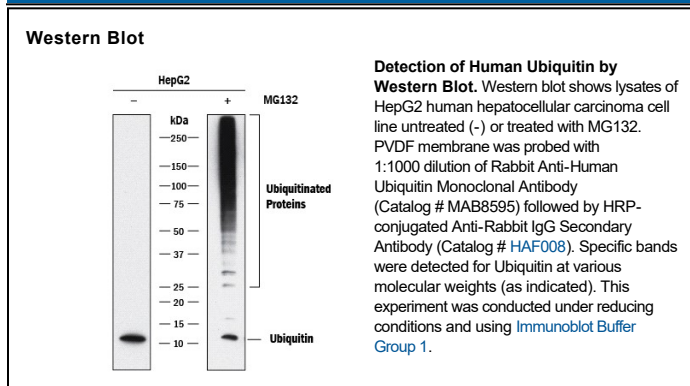
Species Reactivity	Human
Specificity	Detects human Ubiquitin in direct ELISAs
Source	Recombinant Monoclonal Rabbit IgG Clone # 1002A
Purification	Protein A or G purified from cell culture supernatant
Immunogen	HEK293 human embryonic kidney cell line transfected with human Ubiquitin Accession # P0CG47
Formulation	Supplied as a solution in PBS containing BSA, Glycerol and Sodium Azide. See Certificate of Analysis for details. *Small pack size (-SP) is supplied either lyophilized or as a 0.2 µm filtered solution in PBS.

APPLICATIONS

Please Note: Optimal dilutions should be determined by each laboratory for each application. *General Protocols* are available in the *Technical Information* section on our website.

	Recommended Concentration	Sample
Western Blot	1:1000 dilution	See Below

DATA



PREPARATION AND STORAGE

Shipping	The product is shipped with polar packs. Upon receipt, store it immediately at the temperature recommended below. *Small pack size (-SP) is shipped with polar packs. Upon receipt, store it immediately at -20 to -70 °C
Stability & Storage	Use a manual defrost freezer and avoid repeated freeze-thaw cycles. <ul style="list-style-type: none"> ● 12 months from date of receipt, -20 to -70 °C, as supplied. ● 1 month, 2 to 8 °C under sterile conditions after opening. ● 6 months, -20 to -70 °C under sterile conditions after opening.

BACKGROUND

Ubiquitin is a 76 amino acid, highly conserved nuclear and cytoplasmic protein. It is found exclusively in eukaryotes, becomes covalently attached to substrate proteins by enzymes in the Ubiquitin-Proteasome Pathway (UPP) and has a major role in targeting cellular proteins for the ATP-dependent degradation by the 26S proteasome. Ubiquitination also affects proteasome-independent events such as protein localization, activity and function.

PRODUCT SPECIFIC NOTICES

* Contains <0.1% Sodium Azide, which is not hazardous at this concentration according to GHS classifications. Refer to SDS for additional information and handling instructions.