

**DESCRIPTION**

|                           |   |
|---------------------------|---|
| <b>Species Reactivity</b> | Human   |
| <b>Specificity</b>        | Stains human APJ transfectants but not the parental cell line.  |
| <b>Source</b>             | Monoclonal Mouse IgG <sub>3</sub> Clone # 72133   |
| <b>Purification</b>       | Protein A or G purified from hybridoma culture supernatant  |
| <b>Immunogen</b>          | NS0 mouse myeloma cell line transfected with APJ<br>Met1-Asp380<br>Accession # P35414   |
| <b>Formulation</b>        | Lyophilized from a 0.2 µm filtered solution in PBS with Trehalose. See Certificate of Analysis for details.<br>*Small pack size (-SP) is supplied either lyophilized or as a 0.2 µm filtered solution in PBS. |

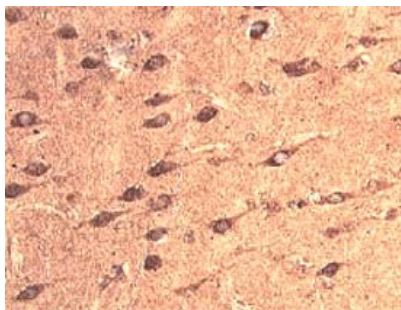
**APPLICATIONS**

Please Note: Optimal dilutions should be determined by each laboratory for each application. General Protocols are available in the Technical Information section on our website.

|                             | <b>Recommended Concentration</b>   | <b>Sample</b>                     |
|-----------------------------|--|-----------------------------------|
| <b>Flow Cytometry</b>       | 2.5 µg/10 <sup>6</sup> cells   | A172 human glioblastoma cell line |
| <b>Immunohistochemistry</b> | 8-25 µg/mL   | See Below                         |
| <b>CyTOF-ready</b>          | Ready to be labeled using established conjugation methods. No BSA or other carrier proteins that could interfere with conjugation. |                                   |

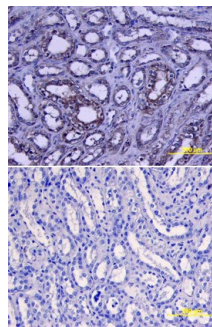
**DATA**

**Immunohistochemistry**



**APJ in Human Brain.** APJ was detected in immersion fixed paraffin-embedded sections of human brain (basal ganglia) using 8 µg/mL Human APJ Monoclonal Antibody (Catalog # MAB856) overnight at 4 °C. Tissue was stained with the Anti-Mouse HRP-DAB Cell & Tissue Staining Kit (brown; Catalog # CTS002) and counterstained with hematoxylin (blue). View our protocol for [Chromogenic IHC Staining of Paraffin-embedded Tissue Sections](#).

**Immunohistochemistry**



**APJ in Human Kidney.** APJ was detected in immersion fixed paraffin-embedded sections of human kidney using Human APJ Monoclonal Antibody (Catalog # MAB856) at 25 µg/mL overnight at 4 °C. Tissue was stained using the Anti-Mouse HRP-DAB Cell & Tissue Staining Kit (brown; Catalog # CTS002) and counterstained with hematoxylin (blue). Lower panel shows a lack of labeling when primary antibodies are omitted and tissue is stained only with secondary antibody followed by incubation with detection reagents. View our protocol for [Chromogenic IHC Staining of Paraffin-embedded Tissue Sections](#).

**PREPARATION AND STORAGE**

|                                |  |
|--------------------------------|--|
| <b>Reconstitution</b>          | Reconstitute at 0.5 mg/mL in sterile PBS.  |
| <b>Shipping</b>                | The product is shipped at ambient temperature. Upon receipt, store it immediately at the temperature recommended below.<br>*Small pack size (-SP) is shipped with polar packs. Upon receipt, store it immediately at -20 to -70 °C   |
| <b>Stability &amp; Storage</b> | <b>Use a manual defrost freezer and avoid repeated freeze-thaw cycles.</b> <ul style="list-style-type: none"> <li>● 12 months from date of receipt, -20 to -70 °C as supplied.</li> <li>● 1 month, 2 to 8 °C under sterile conditions after reconstitution.</li> <li>● 6 months, -20 to -70 °C under sterile conditions after reconstitution.</li> </ul> |

**BACKGROUND**

APJ is a G-protein coupled receptor that is related to the angiotensin receptor. It is primarily expressed in coronary artery endothelium and binds the endogenous ligand, apelin. APJ can also function as a co-receptor for HIV.