

DESCRIPTION

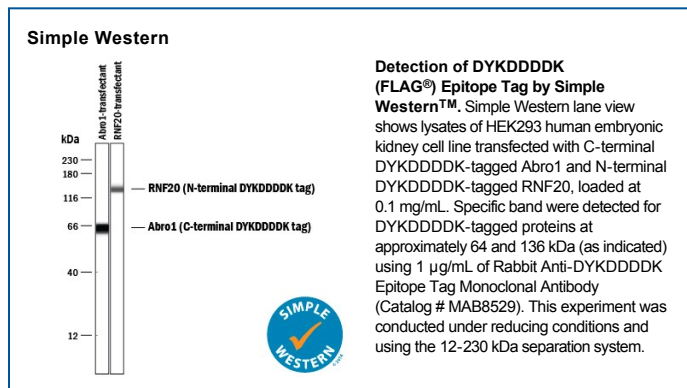
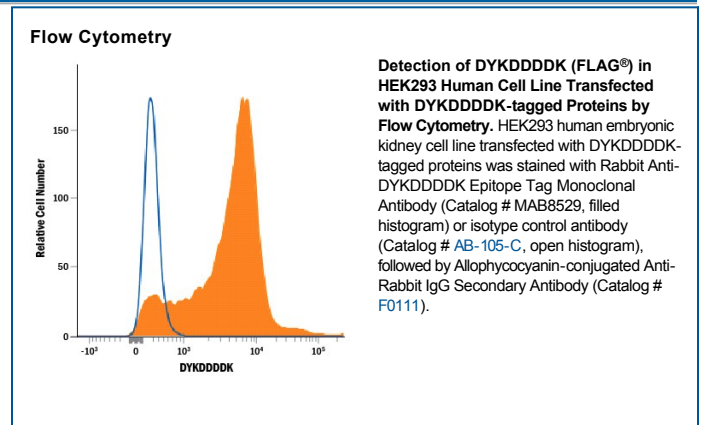
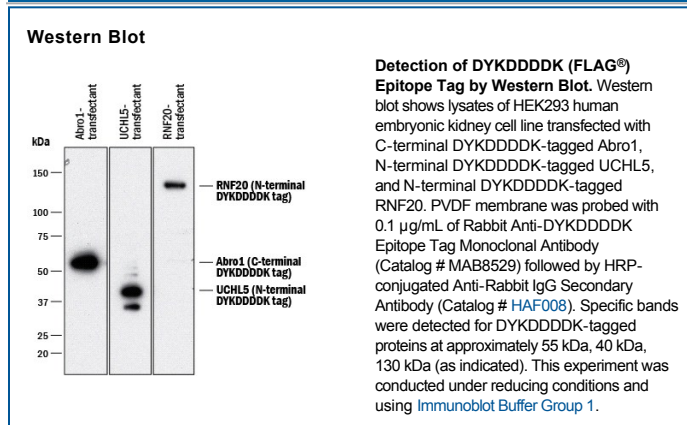
Specificity	Detects N-terminal and C-terminal DYKDDDDK (FLAG [®]) epitope tagged proteins in Western blot.
Source	Recombinant Monoclonal Rabbit IgG Clone # 1042E
Purification	Protein A or G purified from cell culture supernatant
Immunogen	DYKDDDDK epitope tag
Formulation	Lyophilized from a 0.2 µm filtered solution in PBS with Trehalose. See Certificate of Analysis for details. *Small pack size (-SP) is supplied as a 0.2 µm filtered solution in PBS.

APPLICATIONS

Please Note: Optimal dilutions should be determined by each laboratory for each application. *General Protocols* are available in the *Technical Information* section on our website.

	Recommended Concentration	Sample
Western Blot	0.1 µg/mL	See Below
Flow Cytometry	0.25 µg/10 ⁶ cells	See Below
Immunoprecipitation	1-4 µg/100 µg cell lysate	HEK293 human embryonic kidney cell line transfected with C-terminal DYKDDDDK-tagged Abro1 and N-terminal DYKDDDDK-tagged RNF20, see our available Western blot detection antibodies .
Simple Western	1 µg/mL	See Below

DATA



PREPARATION AND STORAGE

Reconstitution	Reconstitute at 0.5 mg/mL in sterile PBS
Shipping	The product is shipped at ambient temperature. Upon receipt, store it immediately at the temperature recommended below. *Small pack size (-SP) is shipped with polar packs. Upon receipt, store it immediately at -20 to -70 °C
Stability & Storage	Use a manual defrost freezer and avoid repeated freeze-thaw cycles. <ul style="list-style-type: none"> ● 12 months from date of receipt, -20 to -70 °C as supplied. ● 1 month, 2 to 8 °C under sterile conditions after reconstitution. ● 6 months, -20 to -70 °C under sterile conditions after reconstitution.