

DESCRIPTION

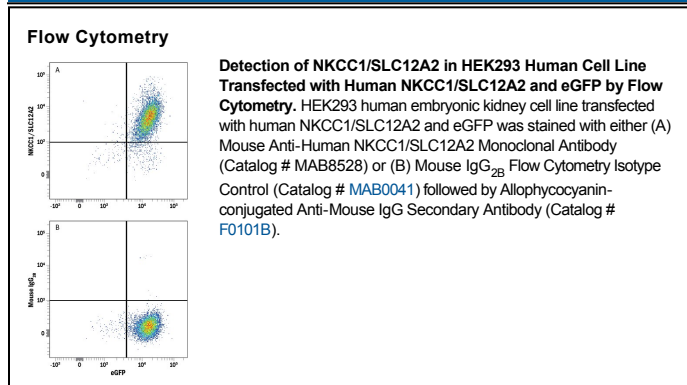
Species Reactivity	Human
Specificity	Stains NKCC1/SLC12A2 transfectants but not irrelevant transfectants in flow cytometry.
Source	Monoclonal Mouse IgG _{2B} Clone # 915911
Purification	Protein A or G purified from hybridoma culture supernatant
Immunogen	NS0 mouse myeloma cell line transfected with human NKCC1/SLC12A2 Met1-Ser1212 Accession # P55011
Formulation	Lyophilized from a 0.2 µm filtered solution in PBS with Trehalose. See Certificate of Analysis for details. *Small pack size (-SP) is supplied as a 0.2 µm filtered solution in PBS.

APPLICATIONS

Please Note: Optimal dilutions should be determined by each laboratory for each application. *General Protocols* are available in the *Technical Information* section on our website.

	Recommended Concentration	Sample
Flow Cytometry	0.25 µg/10 ⁶ cells	See Below
CyTOF-ready	Ready to be labeled using established conjugation methods. No BSA or other carrier proteins that could interfere with conjugation.	

DATA



PREPARATION AND STORAGE

Reconstitution	Reconstitute at 0.5 mg/mL in sterile PBS.
Shipping	The product is shipped at ambient temperature. Upon receipt, store it immediately at the temperature recommended below. *Small pack size (-SP) is shipped with polar packs. Upon receipt, store it immediately at -20 to -70 °C
Stability & Storage	Use a manual defrost freezer and avoid repeated freeze-thaw cycles. <ul style="list-style-type: none"> ● 12 months from date of receipt, -20 to -70 °C as supplied. ● 1 month, 2 to 8 °C under sterile conditions after reconstitution. ● 6 months, -20 to -70 °C under sterile conditions after reconstitution.

BACKGROUND

Solute Carrier, family 12 (potassium/chloride transporter), member 2 (SLC12A2) encodes NKCC1, which mediates sodium and chloride transport and reabsorption. It is a membrane protein that is important in maintaining proper ionic balance and cell volume. In contrast to the renal-specific sodium/potassium/chloride cotransporter SLC12A1, SLC12A2 is expressed in many tissues, including the basolateral membrane of secretory epithelia. It is phosphorylated in response to DNA damage. Three transcript variants encoding two different isoforms have been found for SLC12A2.