

**DESCRIPTION**

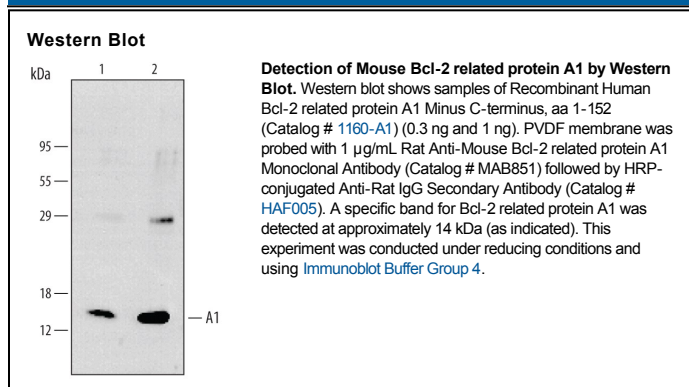
<b>Species Reactivity</b>	Mouse
<b>Specificity</b>	Detects mouse Bcl-2 related protein A1 in direct ELISAs and Western blots.
<b>Source</b>	Monoclonal Rat IgG <sub>2A</sub> Clone # 78616
<b>Purification</b>	Protein A or G purified from ascites
<b>Immunogen</b>	<i>E. coli</i> -derived recombinant mouse Bcl-2 related protein A1 Met1-Ser152 Accession # Q07440
<b>Formulation</b>	Lyophilized from a 0.2 µm filtered solution in PBS with Trehalose. See Certificate of Analysis for details. *Small pack size (-SP) is supplied as a 0.2 µm filtered solution in PBS.

**APPLICATIONS**

**Please Note:** Optimal dilutions should be determined by each laboratory for each application. *General Protocols* are available in the *Technical Information* section on our website.

	<b>Recommended Concentration</b>	<b>Sample</b>
<b>Western Blot</b>	1 µg/mL	See Below

**DATA**



**PREPARATION AND STORAGE**

<b>Reconstitution</b>	Reconstitute at 0.5 mg/mL in sterile PBS.
<b>Shipping</b>	The product is shipped at ambient temperature. Upon receipt, store it immediately at the temperature recommended below. *Small pack size (-SP) is shipped with polar packs. Upon receipt, store it immediately at -20 to -70 °C
<b>Stability &amp; Storage</b>	<b>Use a manual defrost freezer and avoid repeated freeze-thaw cycles.</b> <ul style="list-style-type: none"> <li>● 12 months from date of receipt, -20 to -70 °C as supplied.</li> <li>● 1 month, 2 to 8 °C under sterile conditions after reconstitution.</li> <li>● 6 months, -20 to -70 °C under sterile conditions after reconstitution.</li> </ul>

**BACKGROUND**

Bcl-2 related protein A1 (abbreviated Bcl2a1 or A1) is an anti-apoptotic outer mitochondrial membrane protein that prevents release of cytochrome c from the mitochondria intermembrane space into the cytosol. A1 prevents apoptosis by binding to the BH3 region of pro-apoptotic Bcl-2 family members.