

DESCRIPTION

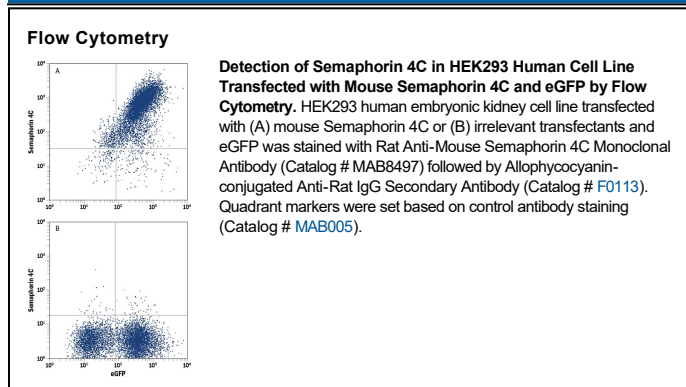
Species Reactivity	Mouse
Specificity	Detects mouse Semaphorin 4C in direct ELISAs. Detects HEK293 human embryonic kidney cell line transfected with mouse Semaphorin 4C by Flow Cytometry. Does not detect untransfected or irrelevant transfected HEK293 cells.
Source	Monoclonal Rat IgG ₁ Clone # 663203
Purification	Protein A or G purified from hybridoma culture supernatant
Immunogen	Mouse myeloma cell line NS0-derived recombinant mouse Semaphorin 4C Ala21-Phe664 Accession # Q64151
Formulation	Lyophilized from a 0.2 µm filtered solution in PBS with Trehalose. See Certificate of Analysis for details. *Small pack size (-SP) is supplied either lyophilized or as a 0.2 µm filtered solution in PBS.

APPLICATIONS

Please Note: Optimal dilutions should be determined by each laboratory for each application. *General Protocols* are available in the *Technical Information* section on our website.

	Recommended Concentration	Sample
Flow Cytometry	0.25 µg/10 ⁶ cells	See Below
CyTOF-ready	Ready to be labeled using established conjugation methods. No BSA or other carrier proteins that could interfere with conjugation.	

DATA



PREPARATION AND STORAGE

Reconstitution	Reconstitute at 0.5 mg/mL in sterile PBS.
Shipping	The product is shipped at ambient temperature. Upon receipt, store it immediately at the temperature recommended below. *Small pack size (-SP) is shipped with polar packs. Upon receipt, store it immediately at -20 to -70 °C
Stability & Storage	Use a manual defrost freezer and avoid repeated freeze-thaw cycles. <ul style="list-style-type: none"> • 12 months from date of receipt, -20 to -70 °C as supplied. • 1 month, 2 to 8 °C under sterile conditions after reconstitution. • 6 months, -20 to -70 °C under sterile conditions after reconstitution.

BACKGROUND

Sema4C (Semaphorin 4C; also Sema I and M-SemaF) is a 100-105 kDa, class IV member of the semaphorin family of proteins. It is expressed by precursors to neurons and myocytes, and may regulate their differentiation into mature forms. Mature mouse Sema4C is a type I transmembrane glycoprotein that is 814 amino acids (aa) in length. It contains a 644 aa extracellular region (aa 21-664) that is characterized by the presence of one Sema domain (aa 30-497), a PSI region (aa 499-552), and an Ig-like C2-type domain (aa 557-645). The cytoplasmic region interacts with PZD-domain containing proteins. Over aa 21-664, mouse Sema4C shares 85% and 95% aa identity with human and rat Sema4C, respectively.