

#### DESCRIPTION

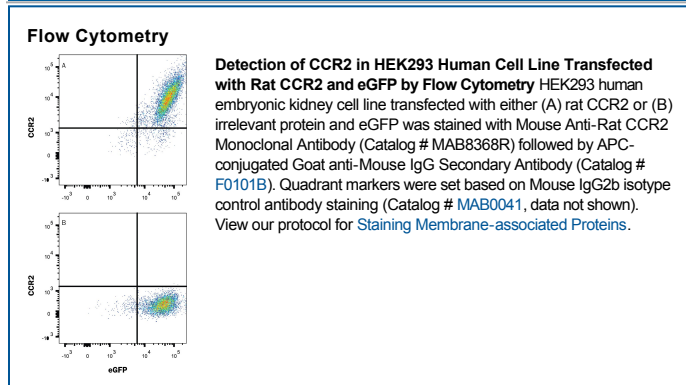
<b>Species Reactivity</b>	Rat
<b>Specificity</b>	Detects rat CCR2 in direct ELISAs.
<b>Source</b>	Recombinant Monoclonal Mouse IgG <sub>2B</sub> Clone # 890231R
<b>Purification</b>	Protein A or G purified from cell culture supernatant
<b>Immunogen</b>	NS0 mouse myeloma cell line transfected with rat CCR2 Accession # O55193
<b>Formulation</b>	Lyophilized from a 0.2 µm filtered solution in PBS with Trehalose. See Certificate of Analysis for details. *Small pack size (-SP) is supplied either lyophilized or as a 0.2 µm filtered solution in PBS.

#### APPLICATIONS

**Please Note:** Optimal dilutions should be determined by each laboratory for each application. *General Protocols* are available in the *Technical Information* section on our website.

	<b>Recommended Concentration</b>	<b>Sample</b>
<b>Flow Cytometry</b>	0.25 µg/10 <sup>6</sup> cells	See Below
<b>CytoF-ready</b>	Ready to be labeled using established conjugation methods. No BSA or other carrier proteins that could interfere with conjugation.	

#### DATA



#### PREPARATION AND STORAGE

<b>Reconstitution</b>	Reconstitute at 0.5 mg/mL in sterile PBS.
<b>Shipping</b>	The product is shipped at ambient temperature. Upon receipt, store it immediately at the temperature recommended below. *Small pack size (-SP) is shipped with polar packs. Upon receipt, store it immediately at -20 to -70 °C
<b>Stability &amp; Storage</b>	<b>Use a manual defrost freezer and avoid repeated freeze-thaw cycles.</b> <ul style="list-style-type: none"> <li>● 12 months from date of receipt, -20 to -70 °C as supplied.</li> <li>● 1 month, 2 to 8 °C under sterile conditions after reconstitution.</li> <li>● 6 months, -20 to -70 °C under sterile conditions after reconstitution.</li> </ul>

#### BACKGROUND

CCR2, also known as CD192, is a 38 kDa 7TM chemokine receptor that preferentially binds CCL2, CCL7, and CCL13. CCR2 is expressed by multiple hematopoietic cells, endothelial cells, fibroblasts, neurons, and smooth muscle cells. It functions as an HIV fusion co-factor and facilitates T cell recruitment during inflammation. Two alternate splice forms (CCR2A and CCR2B) differ only by the addition of 14 amino acids to the intracellular carboxyl terminal. Rat CCR2 shares 95% aa sequence identity with mouse CCR2.