

DESCRIPTION

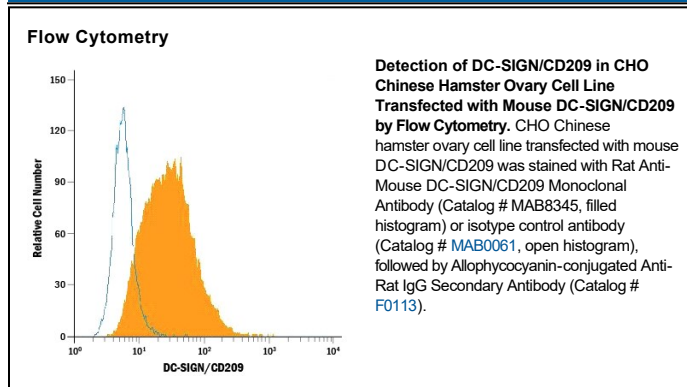
Species Reactivity	Mouse
Specificity	Detects mouse DC-SIGN/CD209 in direct ELISAs.
Source	Recombinant Monoclonal Rat IgG _{2B} Clone # 902404
Purification	Protein A or G purified from cell culture supernatant
Immunogen	NS0 mouse myeloma cell line transfected with mouse DC-SIGN/CD209 Met1-Lys238 Accession # Q91ZX1
Formulation	Lyophilized from a 0.2 µm filtered solution in PBS with Trehalose. See Certificate of Analysis for details. *Small pack size (-SP) is supplied either lyophilized or as a 0.2 µm filtered solution in PBS.

APPLICATIONS

Please Note: Optimal dilutions should be determined by each laboratory for each application. *General Protocols* are available in the *Technical Information* section on our website.

	Recommended Concentration	Sample
Flow Cytometry	0.25 µg/mL	See Below
CyTOF-ready	Ready to be labeled using established conjugation methods. No BSA or other carrier proteins that could interfere with conjugation.	

DATA



PREPARATION AND STORAGE

Reconstitution	Reconstitute at 0.5 mg/mL in sterile PBS.
Shipping	The product is shipped at ambient temperature. Upon receipt, store it immediately at the temperature recommended below. *Small pack size (-SP) is shipped with polar packs. Upon receipt, store it immediately at -20 to -70 °C
Stability & Storage	Use a manual defrost freezer and avoid repeated freeze-thaw cycles. <ul style="list-style-type: none"> ● 12 months from date of receipt, -20 to -70 °C as supplied. ● 1 month, 2 to 8 °C under sterile conditions after reconstitution. ● 6 months, -20 to -70 °C under sterile conditions after reconstitution.

BACKGROUND

Mouse Dendritic Cell-specific ICAM-3 Grabbing Non-integrin (DC-SIGN)/CD209, also known as CD209 Antigen-like Protein A, is a member of the C-type lectin family (1). Mouse DC-SIGN/CD209 is a 33 kDa, 238 amino acid (aa) type II transmembrane protein (2). The extracellular region contains a Ca²⁺-dependent carbohydrate-binding lectin domain (2). In addition to the full-length mouse DC-SIGN/CD209, a second, truncated splice variant has been reported. DC-SIGN/CD209 is not well conserved between mouse and human with the extracellular domain sharing only 63% aa identity. The DC-SIGN/CD209 lectin domain binds mannose oligosaccharides on pathogens including HIV as well as self glycoproteins including ICAMs (2-4). DC-SIGN/CD209 is expressed on dendritic cells (DC) and inflammatory macrophages and contributes to antigen presentation (2, 5, 6).

References:

1. Liu, W. *et al.* (2004) *J. Biol. Chem.* **279**:18748.
2. Caminschi, I. *et al.* (2001) *Mol. Immunol.* **38**:365.
3. Curtis, B.M. *et al.* (1992) *Proc. Natl. Acad. Sci. USA* **89**:8356.
4. Anthony, R.M. *et al.* (2008) *Proc. Natl. Acad. Sci. USA* **105**:19571.
5. Geijtenbeek, T.B. *et al.* (2000) *Cell* **100**:575.
6. Garcia-Vallejo, J.J. and Y. van Kooyk (2013) *Trends Immunol.* **34**:482.