

DESCRIPTION

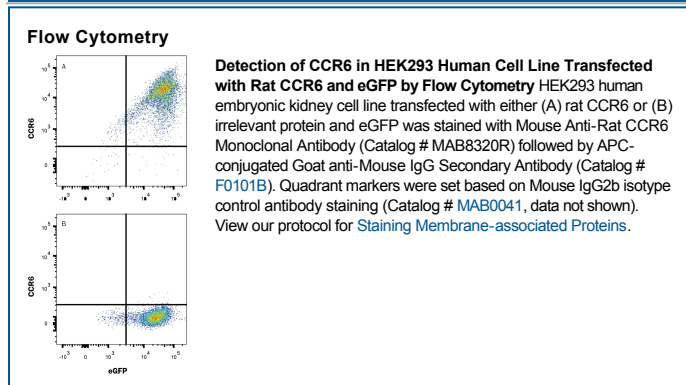
Species Reactivity	Rat
Specificity	Detects rat CCR6 in direct ELISAs.
Source	Recombinant Monoclonal Mouse IgG _{2B} Clone # 876515R
Purification	Protein A or G purified from cell culture supernatant
Immunogen	NSO mouse myeloma cell line transfected with rat CCR6 Met1-Met366 Accession # Q5BK58
Formulation	Lyophilized from a 0.2 µm filtered solution in PBS with Trehalose. See Certificate of Analysis for details. *Small pack size (-SP) is supplied either lyophilized or as a 0.2 µm filtered solution in PBS.

APPLICATIONS

Please Note: Optimal dilutions should be determined by each laboratory for each application. *General Protocols* are available in the *Technical Information* section on our website.

	Recommended Concentration	Sample
Flow Cytometry	0.25 µg/10 ⁶ cells	See Below
CyTOF-ready	Ready to be labeled using established conjugation methods. No BSA or other carrier proteins that could interfere with conjugation.	

DATA



PREPARATION AND STORAGE

Reconstitution	Reconstitute at 0.5 mg/mL in sterile PBS.
Shipping	The product is shipped at ambient temperature. Upon receipt, store it immediately at the temperature recommended below. *Small pack size (-SP) is shipped with polar packs. Upon receipt, store it immediately at -20 to -70 °C
Stability & Storage	Use a manual defrost freezer and avoid repeated freeze-thaw cycles. <ul style="list-style-type: none"> ● 12 months from date of receipt, -20 to -70 °C as supplied. ● 1 month, 2 to 8 °C under sterile conditions after reconstitution. ● 6 months, -20 to -70 °C under sterile conditions after reconstitution.

BACKGROUND

CCR6 is an approximately 45 kDa G-protein linked seven transmembrane domain receptor that binds the chemokine CCL20/MIP-3α. Among hematopoietic cells, CCR6 is expressed on B cells, immature dendritic cells, neutrophils, and various T cell subsets (e.g. CD4⁺ T cells, regulatory T cells, effector memory Th17 cells, and g/d T cells). It is upregulated in several cancers, Alzheimer's brain, and the airways in obstructive pulmonary disease. CCR6 plays an important role in mucosal immunity, IgE mediated allergic reactions, immune cell infiltration into sites of inflammation, and tumor cell invasiveness. It also promotes chemotaxis and tumor angiogenesis in response to beta defensins. Rat CCR6 shares 74% and 87% amino acid sequence identity with human and mouse CCR6, respectively.