

## DESCRIPTION

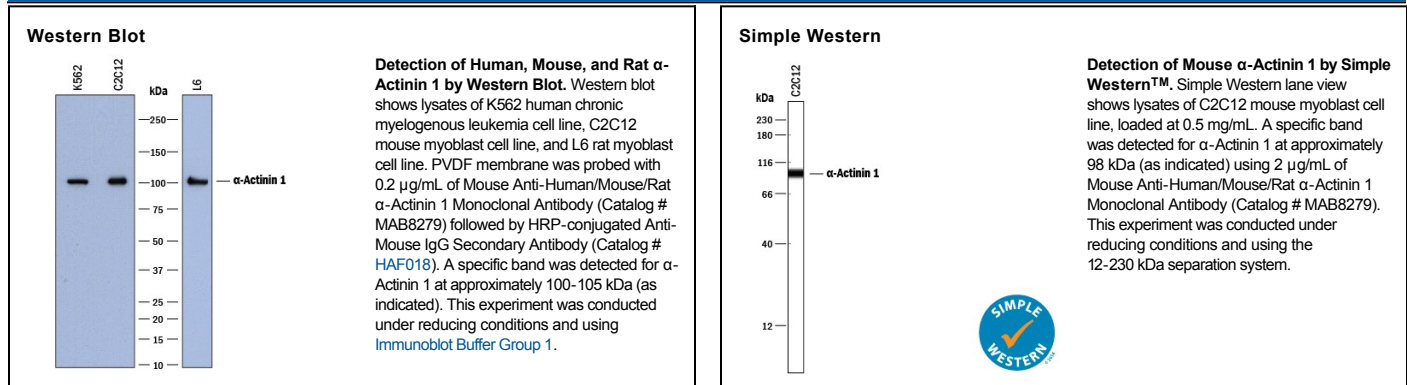
<b>Species Reactivity</b>	Human/Mouse/Rat
<b>Specificity</b>	Detects human $\alpha$ -Actinin 1 in ELISA, and human, mouse and rat $\alpha$ -Actinin 1 in Western Blot.
<b>Source</b>	Monoclonal Mouse IgG <sub>2B</sub> Clone # 910301
<b>Purification</b>	Protein A or G purified from hybridoma culture supernatant
<b>Immunogen</b>	<i>E. coli</i> -derived recombinant human $\alpha$ -Actinin 1 Asn272-Thr500 Accession # P12814
<b>Formulation</b>	Lyophilized from a 0.2 $\mu$ m filtered solution in PBS with Trehalose. See Certificate of Analysis for details. *Small pack size (-SP) is supplied as a 0.2 $\mu$ m filtered solution in PBS.

## APPLICATIONS

**Please Note:** Optimal dilutions should be determined by each laboratory for each application. *General Protocols* are available in the *Technical Information* section on our website.

	Recommended Concentration	Sample
<b>Western Blot</b>	0.2 $\mu$ g/mL	See Below
<b>Simple Western</b>	2 $\mu$ g/mL	See Below

## DATA



## PREPARATION AND STORAGE

<b>Reconstitution</b>	Reconstitute at 0.5 mg/mL in sterile PBS.
<b>Shipping</b>	The product is shipped at ambient temperature. Upon receipt, store it immediately at the temperature recommended below. *Small pack size (-SP) is shipped with polar packs. Upon receipt, store it immediately at -20 to -70 °C
<b>Stability &amp; Storage</b>	<b>Use a manual defrost freezer and avoid repeated freeze-thaw cycles.</b> <ul style="list-style-type: none"> <li>● 12 months from date of receipt, -20 to -70 °C as supplied.</li> <li>● 1 month, 2 to 8 °C under sterile conditions after reconstitution.</li> <li>● 6 months, -20 to -70 °C under sterile conditions after reconstitution.</li> </ul>

## BACKGROUND

$\alpha$ -Actinin 1 (ACTN1) is a member of the spectrin superfamily with a predicted molecular weight of approximately 100 kDa. It is 892 amino acids (aa) in length and shares 99% aa identity with mouse and rat ACTN1. Multiple splice forms exist, resulting in 4 distinct isoforms with different tissue expression patterns. ACTN1 binds to F-actin as well as other cytoskeletal and signaling proteins and plays an important role in both cell motility and muscle contraction.